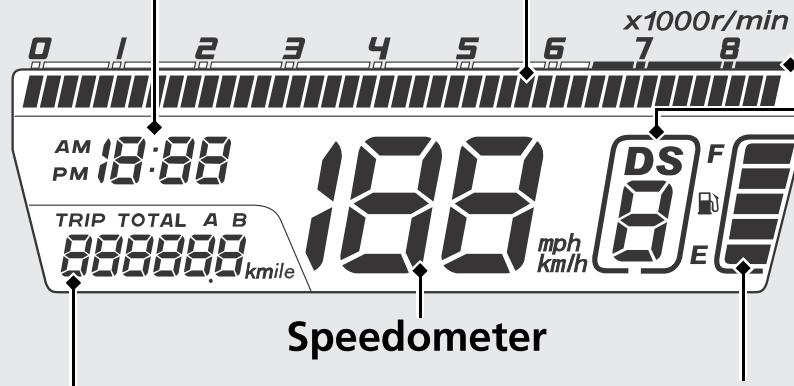


# Instruments (Continued)

CTX700D

## Clock (12-hour display)

To set the clock: P. 27



## Tachometer

### NOTICE

Do not operate the engine in the tachometer red zone. Excessive engine speed can adversely affect engine life.

**Tachometer red zone**  
(excessive engine rpm range)

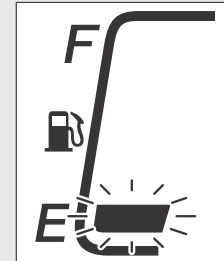
## Odometer [TOTAL] & Tripmeter [TRIP A/B]

A button switches between odometer & tripmeters at the ordinary display.

- Odometer: Total distance ridden.
- Tripmeter: Distance ridden since tripmeter was reset (press and hold the B button to reset to 0.0 km/mile).

## Fuel gauge

Remaining fuel when only 1st (E) segment starts flashing: approximately 3.7 litres (0.98 US gal, 0.81 Imp gal)



**If the fuel gauge indicator repeat flashing or turned off: P. 100**