



SERIAL NUMBERS

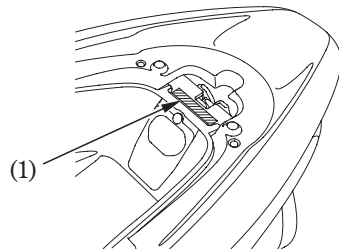
The frame and engine serial numbers are required when registering your scooter. They may also be required by your dealer when ordering replacement parts. Record the numbers here for your reference.

The frame number (1) is stamped on the rear of the frame below the seat.

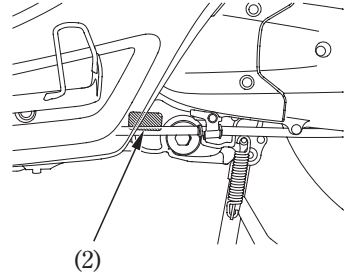
The engine number (2) is stamped on the lower left side of the crankcase.

FRAME NO. _____

ENGINE NO. _____



(1) Frame number
92



(2) Engine number

