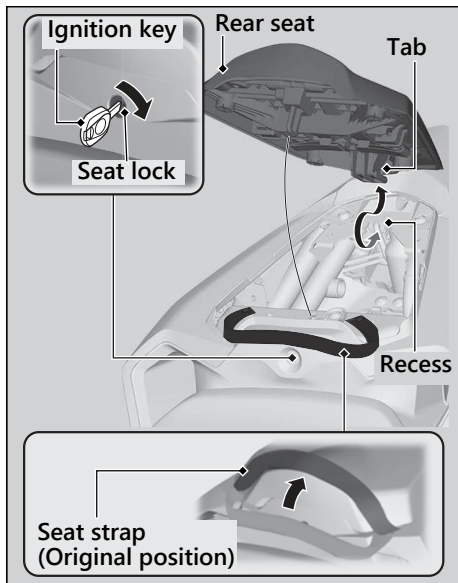


## Rear Seat



### Removal

1. Move the seat strap forward.
2. Insert the ignition key into the seat lock.
3. Turn the ignition key clockwise, then pull the rear seat forward and up.

### Installation

1. Insert the tab into the recess.
2. Push down on the front of the rear seat while inserting the ignition key into the seat lock.  
Make sure that the seat is locked securely in position by pulling it up lightly.
3. Move the seat strap to its original position.

The seat locks automatically when closed.