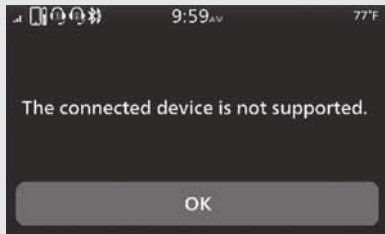


To Setup Apple CarPlay

Use of Apple CarPlay will result in the transmission of certain user and vehicle information (such as vehicle location, speed, and status) to your iPhone to enhance the Apple CarPlay experience. You will need to consent to the sharing of this information on the screen.

- 1 Pair the headsets. **P.159**
- 2 Connect your iPhone using a certified cable to the USB socket. **P.195**
 - u If the following screen is displayed, Apple CarPlay can not be used, but USB power can be supplied.
 1. Select [OK], and then press the **ENT** switch.



To enable Apple CarPlay: **P.191**