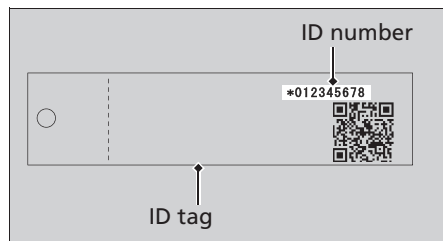


Activating the Electrical System in an Emergency

The electrical system can be activated by inputting the ID number.

Set to ID number input mode

1. Open the left and right saddlebags by the emergency procedures. **P. 191**
2. Press and hold the start button for more than 4 seconds.
 - ▶ The buzzer sounds and the system enters the ID number input mode.
3. Check the ID number on the ID tag.



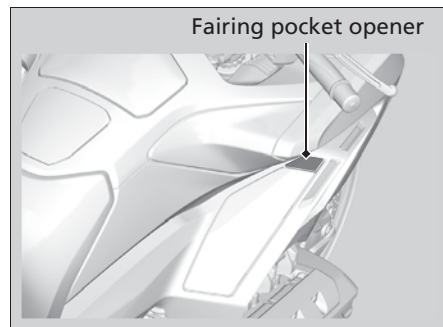
ID number input

You can input your ID number by pressing the fairing pocket opener and the start button. Input the ID number on the ID tag starting with the digit on the left by pressing the fairing pocket opener.

The ID number is input according to the number of times the fairing pocket opener is pressed.

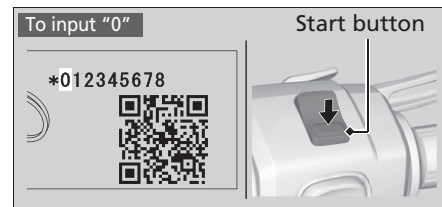
Press the fairing pocket opener the desired number of times, then press the start button to fix the current digit (the buzzer sounds), and input the next digit, and then repeat until all the digits are input.

While inputting the ID number, if the button is not pressed for about 20 seconds, the inputted ID number is cancelled and the system returns to the state before ID number input (the buzzer sounds).



Example:

- To input "0", press the start button without pressing the fairing pocket opener, and then input next digit.



- To input "1", press the fairing pocket opener once, and then press the start button to input the next digit.

