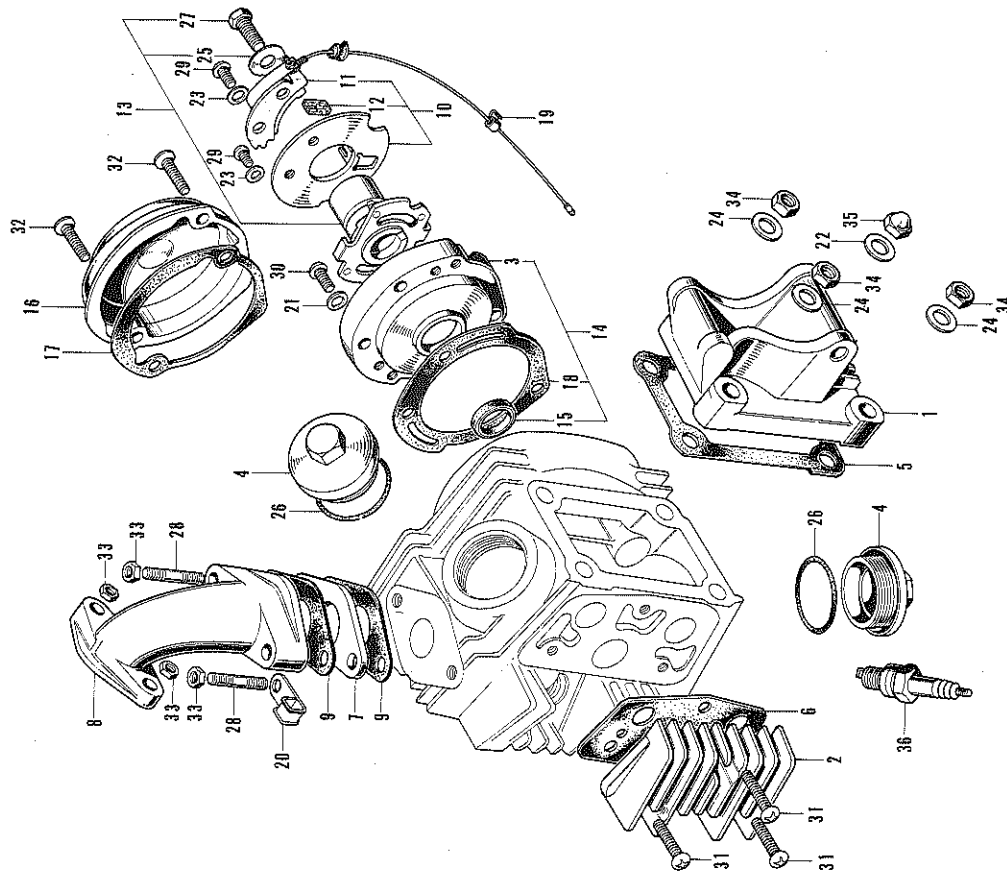


E-1 CYLINDER HEAD COVER-POINT BASE



E-1 CYLINDER HEAD COVER-POINT BASE

| Ref. No. | Part No.        | Description                          | No. Used on |         |
|----------|-----------------|--------------------------------------|-------------|---------|
|          |                 |                                      | ATC 90      | From To |
| 1        | 12301-918-000   | COVER, cylinder head                 | 1           |         |
| 2        | 12331-028-010   | COVER, rocker arm side               | 1           |         |
| 3        | 12332-028-030   | BASE, point                          | 1           |         |
| 4        | 12361-028-000   | CAP, tappet adjusting hole           | 2           |         |
| 5        | 12391-028-000   | GASKET, cylinder head cover          | 1           |         |
| 6        | 12394-028-010   | GASKET, rocker arm side cover        | 1           |         |
| 7        | 16211-918-000   | INSULATOR, carburetor                | 1           |         |
| 8        | 17111-918-000   | PIPE, inlet                          | 1           |         |
| 9        | 17119-046-000   | GASKET, inlet pipe                   | 2           |         |
| 10       | 30200-107-014   | BREAKER ASSY., contact               | 1           |         |
| 11       | 30202-216-004   | BREAKER, contact (NIPPON DENSO)      | 1           |         |
| 12       | 30205-028-004   | FELT, oil (NIPPON DENSO) <i>N.D.</i> | 1           |         |
| 13       | 30220-918-004   | ADVANCER ASSY., spark (NIPPON DENSO) | 1           |         |
| 14       | 30360-028-020   | BASE ASSY., point                    | 1           |         |
| 15       | 30362-028-000   | OIL-SEAL, 13x22x5                    | 1           |         |
| 16       | 30370-028-000   | COVER, point                         | 1           |         |
| 17       | 30391-028-000   | GASKET, point cover                  | 1           |         |
| 18       | 30392-028-020   | GASKET, point base                   | 1           |         |
| 19       | 32301-028-000   | CLIP, point lead cord                | 1           |         |
| 20       | 32305-028-000   | CLIP, high tension cord              | 1           |         |
| 21       | 90441-028-010   | WASHER, sealing, 6mm                 | 3           |         |
| 22       | 90442-028-000   | WASHER, sealing, 8mm                 | 1           |         |
| 23       | 90482-028-000   | WASHER, 5mm                          | 2           |         |
| 24       | 90483-028-000   | WASHER, 8mm                          | 3           |         |
| 25       | 90486-028-000   | WASHER, spark advancer setting       | 1           |         |
| 26       | 91302-200-000   | O RING, 33.5x3                       | 2           |         |
| 27       | 92000-06014     | BOLT, hex., 6x14                     | 1           |         |
| 28       | 92700-06040     | BOLT, stud, 6x40                     | 2           |         |
| 29       | 93500-05010-0-A | SCREW, pan, 5x10                     | 2           |         |
| 30       | 93500-06012     | SCREW, pan, 6x12                     | 3           |         |
| 31       | 93500-06020     | SCREW, pan, 6x20                     | 3           |         |
| 32       | 93700-05022-0-B | SCREW, oval, 5x22                    | 2           |         |
| 33       | 94001-06000     | NUT, hex., 6mm                       | 4           |         |
| 34       | 94001-08000-0-S | NUT, hex., 8mm                       | 3           |         |
| 35       | 94021-08000-0-S | NUT, cap, 8mm                        | 1           |         |
| 36       | 99006-58714     | PLUG, sparking (D-SHS, NGK)          | 1           |         |

06110-105-900 Gasket Kit Engine

I.A.