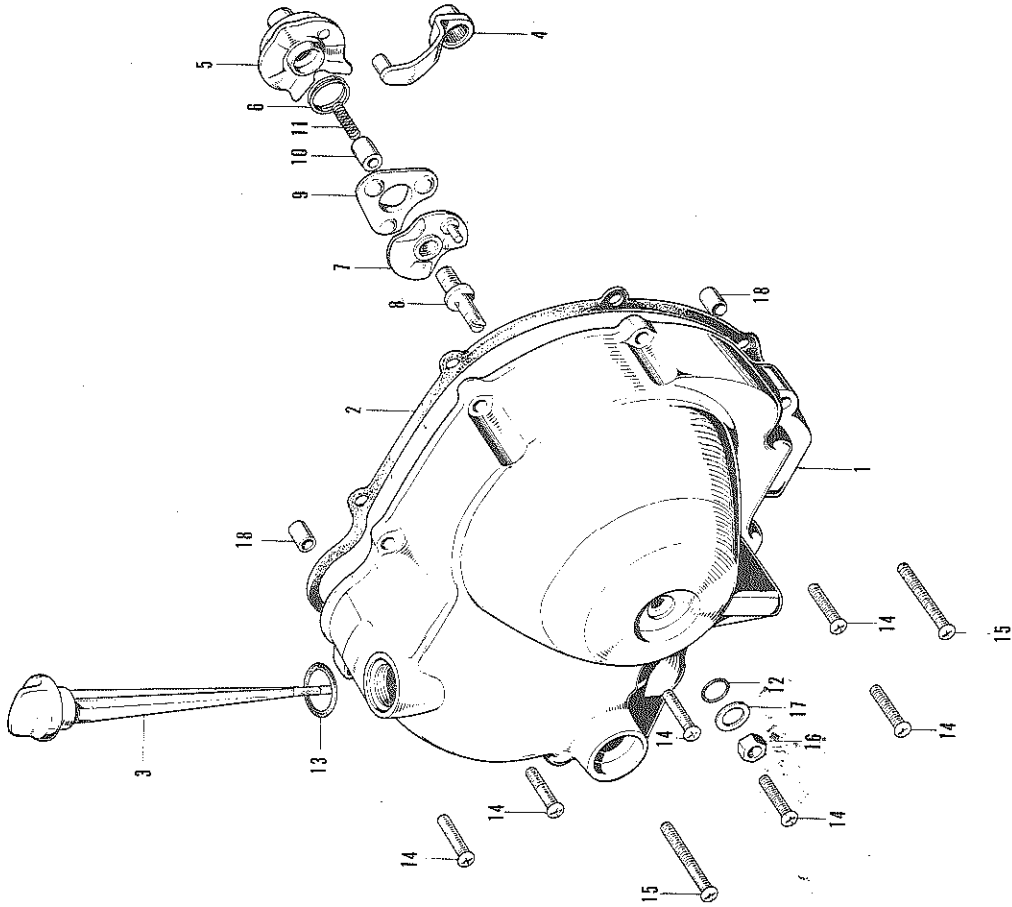


E-7 R. CRANKCASE COVER-CLUTCH LIFTER



E-7 R. CRANKCASE COVER-CLUTCH LIFTER

| Ref. No. | Part No.       | Description                | Reqd. No. ATC | No. Used on |    |
|----------|----------------|----------------------------|---------------|-------------|----|
|          |                |                            |               | From        | To |
| 1        | 11330-918-000  | COVER, R. crankcase        | 1             |             |    |
| 2        | 11383-028-020  | GASKET, R. crankcase cover | 1             |             |    |
| 3        | 15650-028-010  | GAUGE, oil level           | 1             |             |    |
| 4        | 22811-046-010  | LEVER, clutch              | 1             |             |    |
| 5        | 22820-918-000  | PLATE, clutch cam          | 1             |             |    |
| 6        | 22825-046-000  | SPRING, cam plate side     | 1             |             |    |
| 7        | 22830-046-000  | PLATE, clutch lifter       | 1             |             |    |
| 8        | 22846-046-010  | BOLT, clutch adjusting     | 1             |             |    |
| 9        | 22850-046-000  | RETAINER, ball             | 1             |             |    |
| 10       | 25551-918-000  | THROUGH, oil               | 1             |             |    |
| 11       | 25555-046-000  | SPRING, oil through        | 1             |             |    |
| 12       | 91303-001-000  | O RING, 8 mm               | 1             |             |    |
| 13       | 91307-035-000  | O RING, 18X3               | 1             |             |    |
| 14       | 93500-06020    | SCREW, pan., 6X20          | 6             |             |    |
| 15       | 93500-06032    | SCREW, pan., 6X32          | 2             |             |    |
| 16       | 94001-08000-05 | NUT, hex., 3 mm            | 1             |             |    |
| 17       | 94101-08000    | WASHER, plain, 8 mm        | 1             |             |    |
| 18       | 94301-10160    | PIN, knock, 10X16          | 2             |             |    |

06111-918-670 Gasket Kit (Bolsa)

I.A.