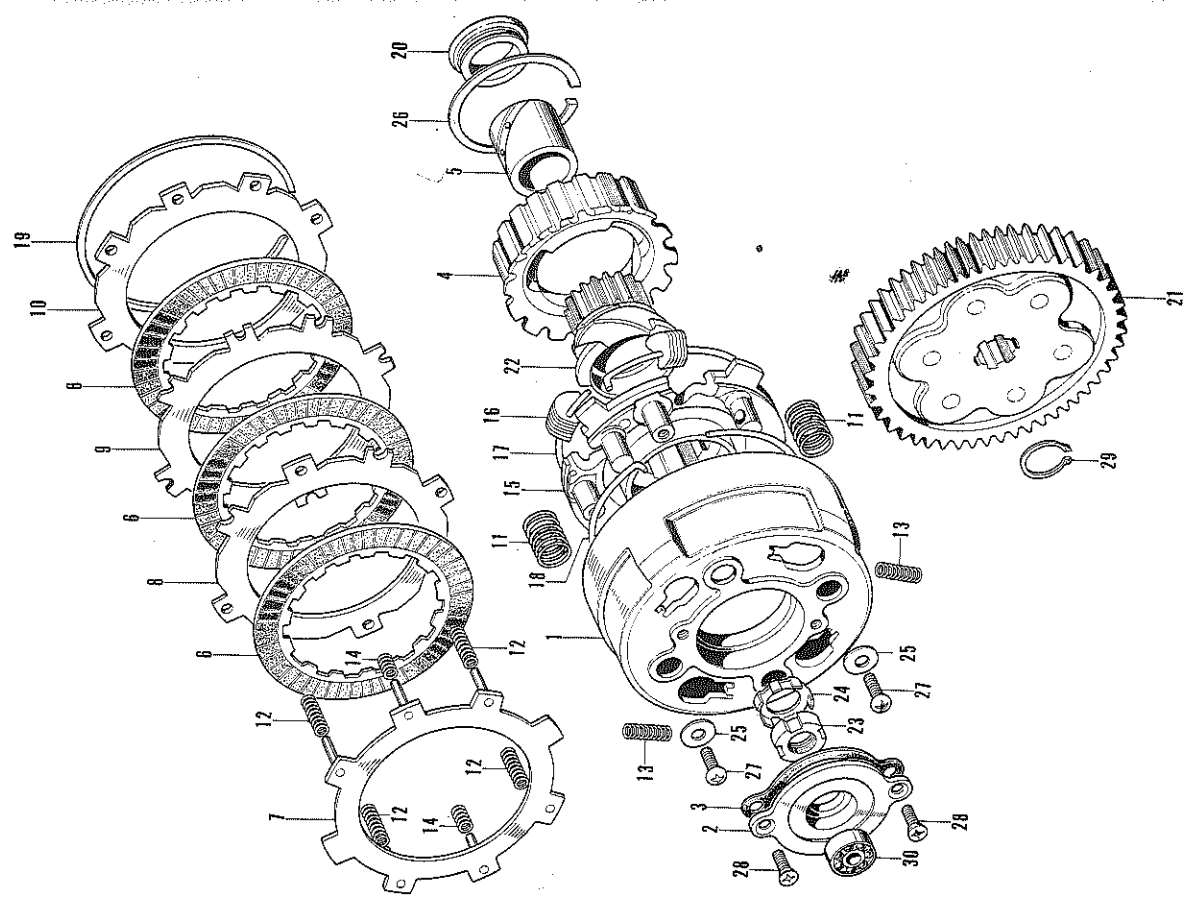


E-8 CLUTCH

E-8 CLUTCH

Ref. No.	Part No.	Description	No. Used on	
			ATC 90	From To
1	22101-046-030	OUTER, clutch	1	
2	22111-028-010	COVER, clutch outer	1	
3 *	22112-028-000	GASKET, clutch outer cover	1	
4 *	22121-046-020	CENTER, clutch	1	
5 *	22131-028-000	GUIDE, clutch center	1	
6 *	22201-046-000	DISK, clutch friction	3	22201-021-630
7	22311-046-000	PLATE A, clutch	1	
8 *	22321-046-010	PLATE B, clutch	1	
9 *	22331-046-000	PLATE C, clutch	1	
10 *	22341-046-000	PLATE D, clutch	1	
11 *	22401-046-000	SPRING, clutch	4	
12 *	22411-053-010	SPRING, clutch free	4	
13 *	22421-035-000	SPRING, clutch damper	4	
14 *	22431-046-010	SPRING, sub clutch free	2	
15 *	22511-046-010	PLATE, drive	1	
16	22531-033-010	WEIGHT, clutch	24	
17	22535-033-000	RING, clutch weight center	1	
18	22536-483-000	RING, clutch weight stopper	1	
19 *	22901-028-000	SET-RING, 102.5 mm	1	
20 *	22911-046-000	COLLAR, 20 mm	1	
21 *	23110-046-000	GEAR, primary driven (87T)	1	
22 *	23111-046-020	GEAR, drive (18T)	1	
23 *	90231-028-000	NUT, locking, 16 mm	1	
24 *	90431-028-010	WASHER, locking, 16 mm	1	
25	90483-040-000	WASHER, stopper, 16 mm	4	
26 *	90603-046-000	CIR-CLIP, 38 mm	1	
27	93500-05008-0-A	SCREW, pan, 5x8	4	
28	93600-05012-0-A	SCREW, flat, 5x12	2	
29	94510-20000	CIR-CLIP, 20 mm	1	
30 *	96100-60000	BEARING, ball, 6000	1	



Prezzo Totale f 87.784 - circa

I.A.