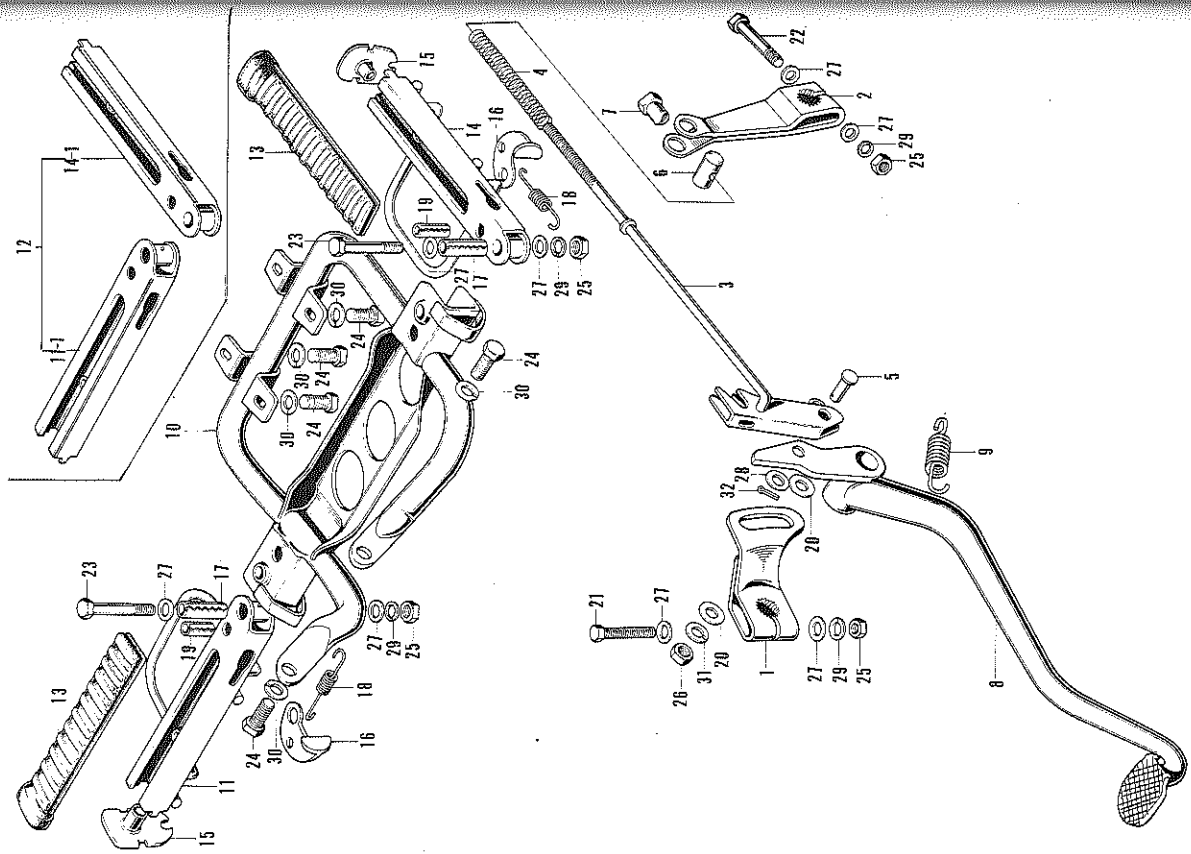


F-8 STEP-BRAKE PEDAL

F-8 STEP-BRAKE PEDAL

Ref. No.	Part No.	Description	No. Used on	
			ATC 90	To
1	40612-918-040	ARM, tensioner lock	1	
2	43410-918-000	ARM, rear brake	1	
3	43470-918-000	LEVER, escape	1	
4	43472-001-000	SPRING, rear brake rod	1	
5	43472-918-000	SHAFT, escape	1	
6	45461-001-000	JOINT, front brake arm	1	
7	45462-001-000	NUT, front brake adjust	1	
8	46500-918-010XW	PEDAL, brake (Chrome)	1	
9	46514-918-000	SPRING, brake pedal	1	
10	50610-918-030B	BRACKET, step (Black)	1	
11	50630-918-670	(Superseded by 50630-918-305)		
o 11-1	50630-918-040	STEP, right	1	102812 ~
o 12	50630-918-305	STEP, SET	1	~102811
13	50635-918-000	RUBBER, step	2	
14	50640-918-670	(Superseded by 50630-918-305)		
o 14-1	50640-918-040	STEP, left	1	102612 ~
15	50651-918-300XW	STOPPER, step	2	
16	50671-918-000	LEVER, step	2	
17	50672-918-000	PIN, spring, 10X36	2	
18	50673-918-000	SPRING, lock	2	
o 19	50674-918-000	PIN, spring, 8X22	2	
20	90626-230-000	WASHER, 10.2#	2	
21	92000-06035	BOLT, hex., 6X35	1	
22	92000-06040	BOLT, hex., 6X40	1	
23	92000-06045	BOLT, hex., 6X45	2	
24	92000-08020-0A	BOLT, hex., 8X20	6	
25	94001-06000	NUT, hex., 6 mm	4	
26	94001-10000-0S	NUT, hex., 10 mm	1	
27	94101-06000	WASHER, plain, 6 mm	8	
28	94101-08000	WASHER, plain, 8 mm	1	
29	94111-06000	WASHER, spring, 6 mm	4	
30	94111-08000	WASHER, spring, 8 mm	6	
31	94111-10000	WASHER, spring, 10 mm	1	
32	94201-20180	PIN, split, 2 mm	1	



I.A.