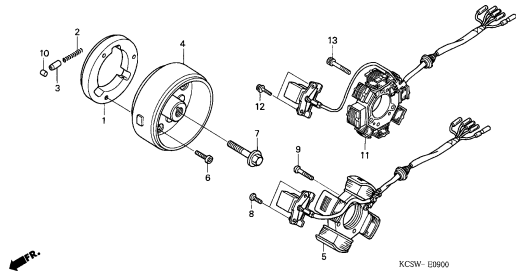


ENGINE GROUP 发动机

E-9

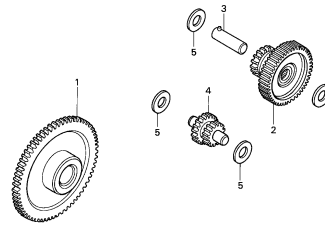
GENERATOR
磁电机



KCSW-E0900

E-10

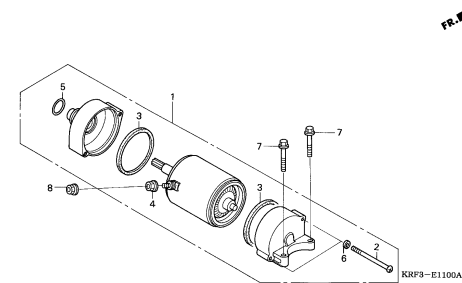
STARTING GEAR
起动齿轮



KRF3-E1000

E-11

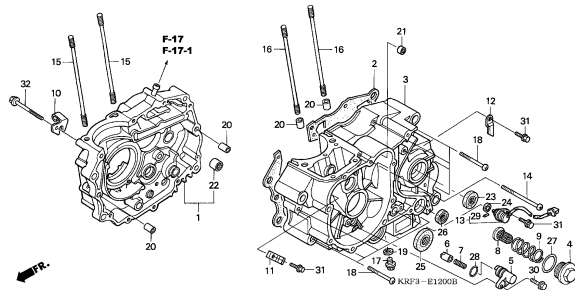
STARTING MOTOR
起动电机



KRF3-E1100A

E-12

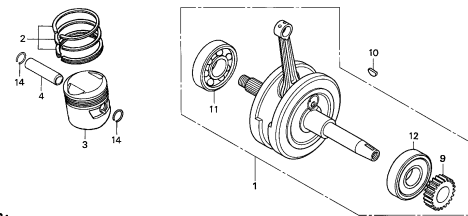
CRANKCASE
曲轴箱



KRF3-E1200B

E-13

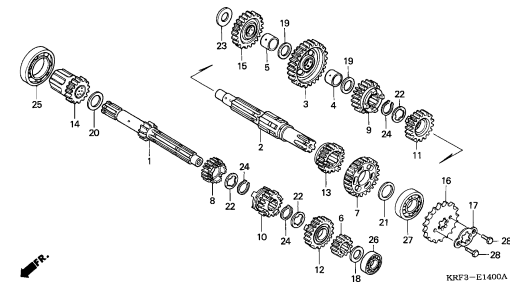
CRANKSHAFT/PISTON
曲轴 / 活塞



KRF3-E1300B

E-14

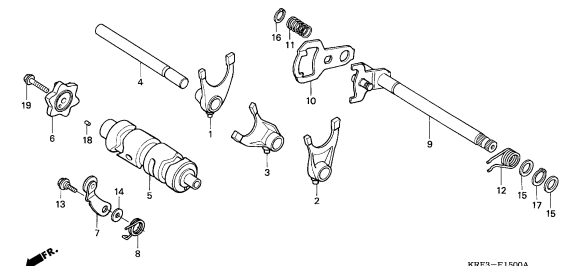
TRANSMISSION
变速箱



KRF3-E1400A

E-15

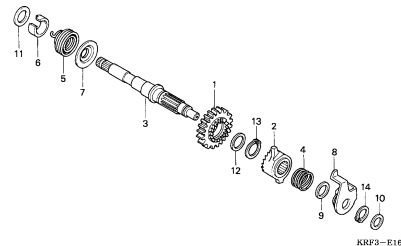
GEARSHIFT DRUM
变档鼓



KRF3-E1500A

E-16

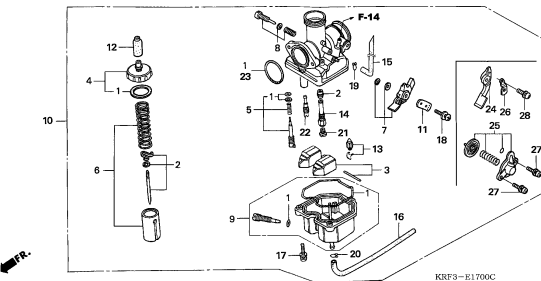
KICK STARTER SPINDLE
反冲起动轴



KRF3-E1600

E-17

CARBURETOR
化油器



KRF3-E1700C