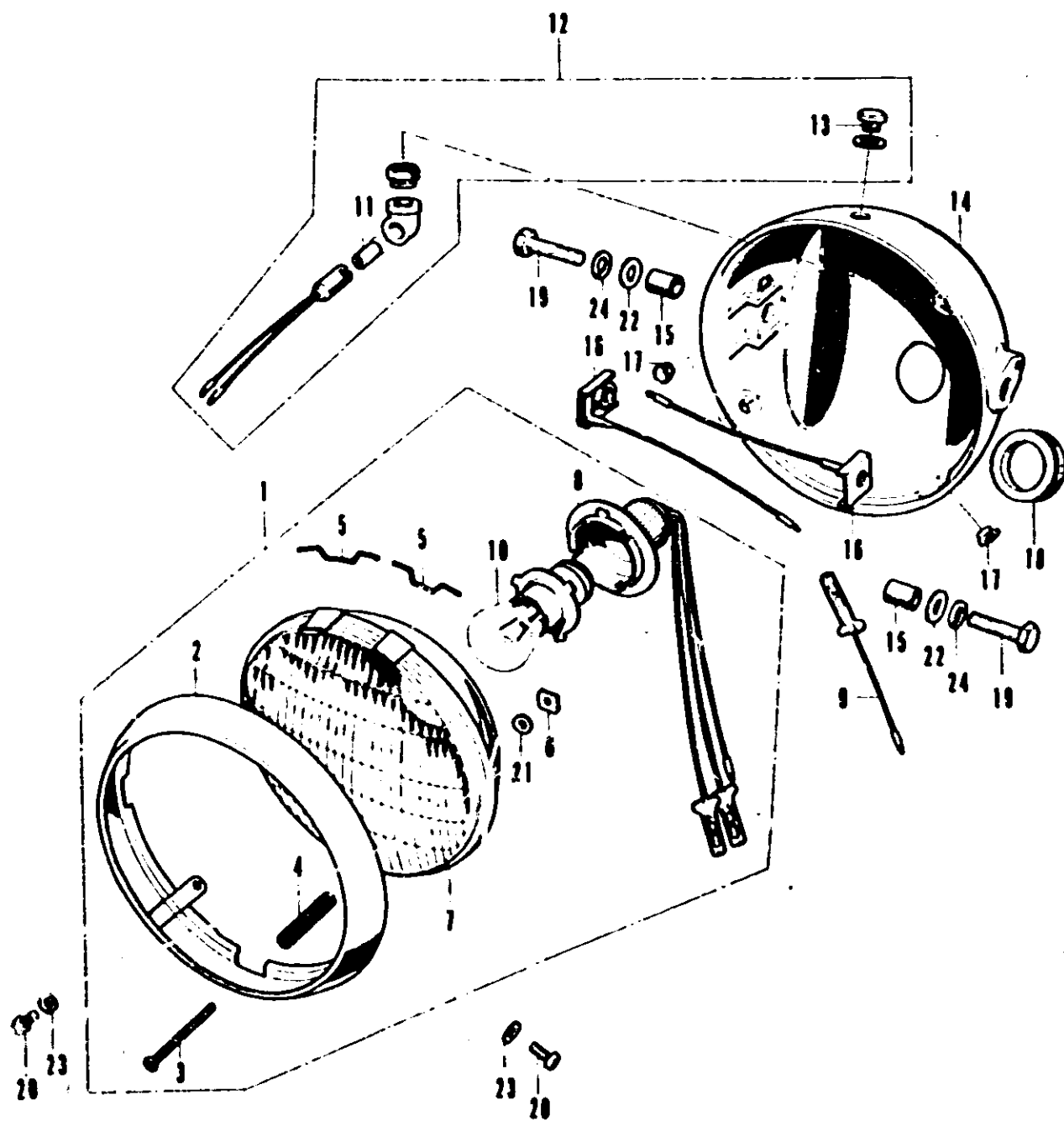


F-20 Head Light (Used in U,D)



F-20 Head Light (Used in U, D)



Ref. No.	Part. No.	Description	Reqd. No.				Serial No	Area code
			CB250 B1 K4	CB350 B1 K4	CL350 P4 K4			
1	33100-292-033	LIGHT ASSY., HEAD (12V 35/25W)	1	1	1	1	D+U	
2	33101-292-033	REFL. HEAD LIGHT	1	1	1	1	D+U	
3	33103-292-003	SCREW HEAD LIGHT BEAR ^{ING} ADJUSTING	1	1	1	1	D+U	
4	33107-307-000	SPRING HEAD LIGHT BEAR ^{ING} ADJUSTING	1	1	1	1	D+U	
5	33108-292-003	SPRING UNIT HOLDER	2	2	2	2	D+U	
6	33117-292-003	(REF) BEAR ADJUST (STANLEY)	1	1	1	1	D+U	
7	33120-292-033	LIGHT UNIT, HEAD	1	1	1	1	D+U	
8	33130-292-033	SOCKET, HEAD LIGHT	1	1	1	1	D+U	
9	33605-310-000	CORC, TURN SIGNAL SW	1	1	1		5087715 U 4105399 D+U 4058312 D+U	
10	34901-292-003	BULB, HEAD LIGHT (12V 35/25W)	1	1	1	1	D+U	
11	34902-255-000	BULB, DASH (12V 35)	1	1	1	1	D+U	
12	37550-292-010	LAMP ASSY., REAR PILOT	1	1	1	1	D+U	
13	37551-292-000	LENS, HEAD PILOT	1	1	1	1	D+U	
14	61301-317-700A 61301-333-003B	CASE, HEAD LIGHT	1	1	1	1	5026205 U 4112951 D+U 4058987 D+U	
15	61302-292-000	COLLAR, HEAD LIGHT CASE	2	2	2	2	5026206 U 4112952 D+U 4058998 D+U	
16	61303-336-000	WASHER, HEAD LIGHT CASE	2	2	2	2	D+U	
17	61304-292-000	COLLAR, HEAD LIGHT SETTING	2	2	2	2	D+U	
18	61306-333-003	GEOMER, HEAD LIGHT CASE	1	1	1	1	5026206 U 4112952 D+U 4058998 D+U	
19	92000-10032-00	BOLT, HEX., 10X32	2	2	2	2	D+U	
20	93500-05016-00	SCREW, PAN, 5X16	2	2	2	2	D+U	
21	94101-04000	WASHER, PLAIN, 4PH	1	1	1	1	D+U	
22	94111-10000	WASHER, PLAIN, 10PH	2	2	2	2	D+U	
23	94112-00000	WASHER, SPRING, 5PH	2	2	2	2	D+U	
24	94111-10000	WASHER, SPRING, 10PH	2	2	2	2	D+U	