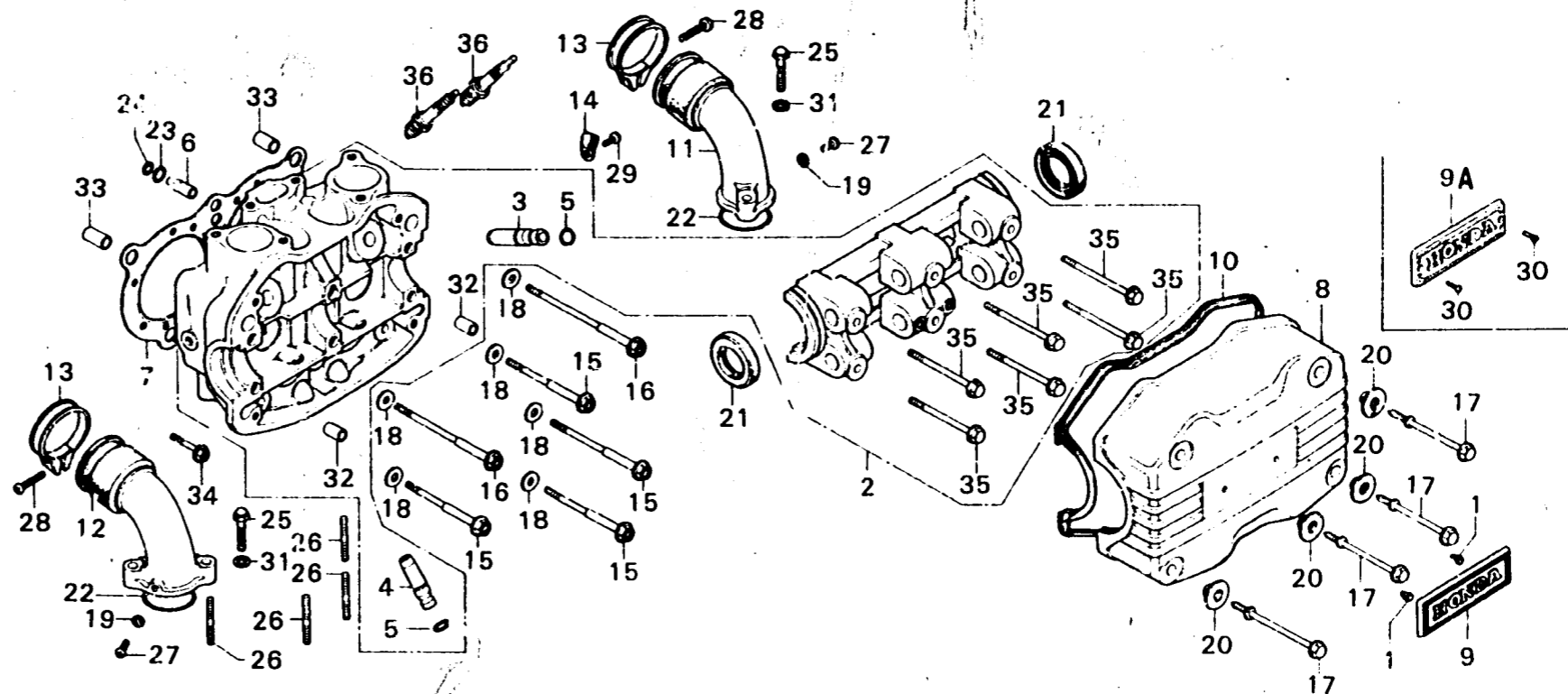




E-3

Left cylinder head



B371-3

Service item	F.R.T.	Ref. No.	Part No.	Description	Reqd. No.				Serial No.	Area code
					GL1000	GL1000	LTD K1	K2		
CYLINDER HEAD ASSY. • Valve rapping included	2.3	1	11633-323-000	PUSH ON FIX, J TYPE	2	2				
VALVE GUIDE • Reaming included add 0.2 • Valve seat refacing excluded. If it refaced add 0.2	1.6	2	12200-371-000	HEAD ASSY., CYLINDER	1	2			2038639	
			12200-371-010	HEAD ASSY., CYLINDER	1				1004136	
CYLINDER HEAD GASKET	1.1	3	12204-371-305	GUIDE, IN. VALVE	2	1	1	1		
27 x 43 x 9 OIL SEAL	0.9	4	12205-371-305	GUIDE, EX. VALVE	2	2	2	2		
8 x 40 STUD BOLT • Add 0.1	0.4	5	12211-250-310	CLIP, VALVE GUIDE	4	4	4	4		
INLET MANIFOLD	0.2	6	12238-371-000	ORIFICE, OIL CONTROL	1	1	1	1		
CYLINDER HEAD COVER/EMBLEM	0.1	7	12251-371-003	GASKET, CYLINDER HEAD	1	1	1	1		
SPARK PLUG • One or both	0.1	8	12311-371-000	COVER, CYLINDER HEAD	1					
			12311-371-010	COVER, CYLINDER HEAD		1			2100001	2038639
			12311-371-980	COVER, CYLINDER HEAD		1		1		
		9	12312-371-000	EMBLEM, HEAD COVER	1					
			12312-371-610	EMBLEM, HEAD COVER		1				
		9A	12312-371-611	EMBLEM, HEAD COVER		1			2100001	2038639
		10	12328-371-000	GASKET, HEAD COVER	1	1	1	1		
		11	17110-371-000	MANIFOLD A, IN.	1	1	1			
			17110-371-980	MANIFOLD A, IN.		1				
		12	17120-371-000	MANIFOLD B, IN.	1	1	1			
			17120-371-980	MANIFOLD B, IN.		1				
		13	17255-371-000	BAND, IN. MANIFOLD	2	2	2			

1979.04.10

C8