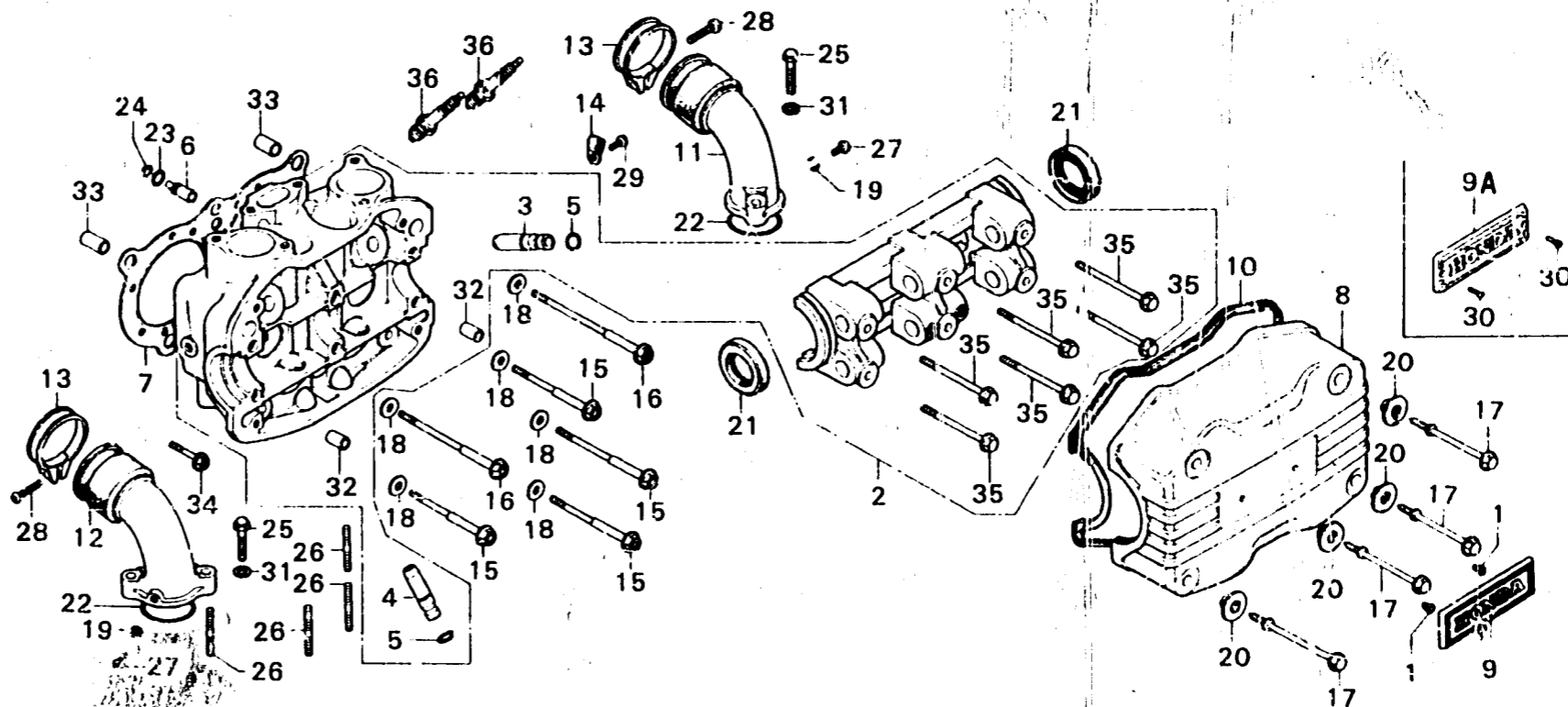




E-3

Left cylinder head



B371-3

| Service item | F.R.T. | Ref. No. | Part No.       | Description           | Reqd. No. |            |    |    | Serial No. | Area code        |
|--------------|--------|----------|----------------|-----------------------|-----------|------------|----|----|------------|------------------|
|              |        |          |                |                       | GL1000    | GL1000 LTD | K1 | K2 |            |                  |
|              |        |          | 17255-371-980  | BAND, IN, MANIFOLD    |           | 2          |    |    |            |                  |
|              |        | 14       | 32111-323-000  | CLAMPER, CORD         | 1         | 1          | 1  | 1  |            |                  |
|              |        | 15       | 90001-371-003  | BOLT, FLANGE, 10X90   | 4         | 4          | 4  | 4  |            |                  |
|              |        | 16       | 90002-371-003  | BOLT, FLANGE, 10X115  | 2         | 2          | 2  | 2  |            |                  |
|              |        | 17       | 90018-371-000  | BOLT, SPECIAL, 6X63,2 | 4         | 4          | 4  | 4  |            |                  |
|              |        |          | 90018-371-980  | BOLT, SPECIAL, 6X63,2 |           | 4          |    |    |            |                  |
|              |        | 18       | 90438-634-000  | WASHER, 21X11X2,3     | 6         | 6          | 6  | 6  |            |                  |
|              |        | 19       | 90452-323-000  | WASHER, THRUST, 5MM   | 2         | 2          | 2  | 2  |            |                  |
|              |        | 20       | 90541-371-000  | RUBBER, MOUNT         | 4         | 4          | 4  | 4  |            |                  |
|              |        |          | 90541-371-980  | RUBBER, MOUNT         |           | 4          |    |    |            |                  |
|              |        | 21       | 91209-371-003  | OIL SEAL, 27X43X9     | 2         | 2          | 2  | 2  |            |                  |
|              |        | 22       | 91301-371-003  | O-RING, 40X2,6        | 2         | 2          | 2  | 2  |            |                  |
|              |        | 23       | 91305-371-003  | O-RING, 6,5X1,5       | 1         | 1          | 1  | 1  |            |                  |
|              |        | 24       | 91308-371-003  | O-RING, 4,1X1,5       | 1         | 1          | 1  | 1  |            |                  |
|              |        | 25       | 92500-06032-0B | BOLT, CAP, 6X32       | 4         | 4          | 4  | 4  |            |                  |
|              |        |          | 90044-371-980  | BOLT, CAP, 6X32       |           | 4          |    |    |            |                  |
|              |        | 26       | 92700-08040-0E | BOLT, STUD, 8X40      | 4         | 4          | 4  | 4  |            |                  |
|              |        |          | 90035-371-000  | BOLT, STUD, 8X43      |           |            |    | 4  |            |                  |
|              |        | 27       | 93500-05008-0A | SCREW, PAN, 5X8       | 2         | 2          | 2  | 2  |            |                  |
|              |        |          | 90050-371-980  | SCREW, PAN, 5X8       |           | 2          |    |    |            |                  |
|              |        | 28       | 93500-05020-0G | SCREW, PAN, 5X20      | 2         | 2          | 2  | 2  |            |                  |
|              |        | 29       | 93500-06008    | SCREW, PAN, 6X8       | 1         | 1          | 1  | 1  |            |                  |
|              |        |          | 90053-371-980  | SCREW, PAN, 6X8       |           | 1          |    |    |            |                  |
|              |        | 30       | 93700-03006-0J | SCREW, OVAL, 3X6      |           |            | 2  |    | 2100001    | DK,DM,E,ED,F,G,U |
|              |        |          | 93700-03006-1G | SCREW, OVAL, 3X6      |           |            |    | 2  |            |                  |
|              |        | 31       | 94101-06000    | WASHER, PLAIN, 6MM    | 4         | 4          | 4  | 4  |            |                  |

1979.04.10

C9