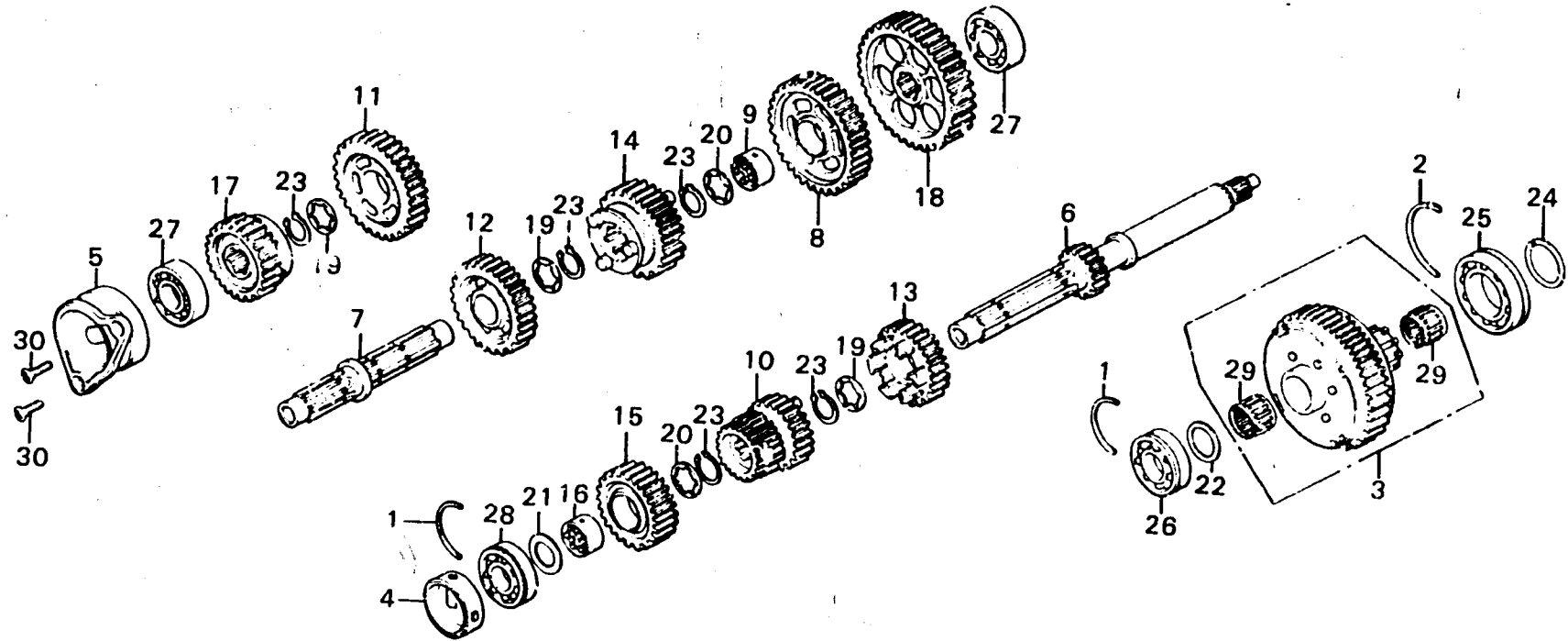


E 8

E-14

Transmission



B371-14

Service item	F.R.T.	Ref. No.	Part No.	Description	Reqd. No.				Serial No.	Area code
					GL1000	GL1000	LTDK1	K2		
25 x 35 x 20 NEEDLE BEARING	*6.1	1	13495-300-000	RING A, BALL BEARING SET	2	2	2	2		
PRIMARY DRIVEN SPROCKET and its related parts	*5.9	2	13496-300-000	RING B, BALL BEARING SET	1	1	1	1		
TRANSMISSION MAINSHAFT and its related parts	*5.7	3	23110-371-000	SPROCKET COMP., PRIMARY DRIVEN	1	1	1	1		
TRANSMISSION COUNTER-SHAFT and its related parts		4	23141-371-000	PASS, MAINSHAFT OIL	1	1	1	1		
TRANSMISSION COUNTER-SHAFT and its related parts		5	23151-371-000	HOLDER C, BEARING	1	1	1	1		
one motorcycle at 6.1		6	23210-371-000	MAINSHAFT COMP., TRANSMISSION (18T)	1	1	1	1		
MAINSHAFT OIL PASS	*5.1	7	23220-371-000	COUNTERSHAFT, TRANSMISSION	1	1	1	1		
		8	23421-300-050	GEAR, COUNTERSHAFT LOW (43T)	1	1	1	1		
		9	23425-300-010	BUSH, 29X14	1	1	1	1		
		10	23431-371-000	GEAR, MAINSHAFT SECOND & THIRD (24T&27T)	1	1	1	1		
		11	23440-371-000	GEAR COMP., COUNTERSHAFT SECOND (41T)	1	1	1	1		
		12	23450-371-000	GEAR COMP., COUNTERSHAFT THIRD (36T)	1	1	1	1		
		13	23460-371-000	GEAR COMP., MAINSHAFT FOURTH (31T)	1	1	1	1		
		14	23471-371-000	GEAR, COUNTERSHAFT FOURTH (34T)	1	1	1	1		
		15	23481-371-000	GEAR, MAINSHAFT TOP (33T)	1	1	1	1		
		16	23485-300-020	BUSH, 28X20.5	1	1	1	1		
		17	23491-371-000	GEAR, COUNTERSHAFT TOP (31T)	1	1	1	1		
		18	23501-371-000	GEAR, FINAL DRIVE (40T)	1	1	1	1		
		19	90451-371-000	WASHER, THRUST, 25X31	3	3	3	3		
		20	90452-371-000	WASHER, THRUST, 25X34	2	2	2	2		

1979.04.10

E8