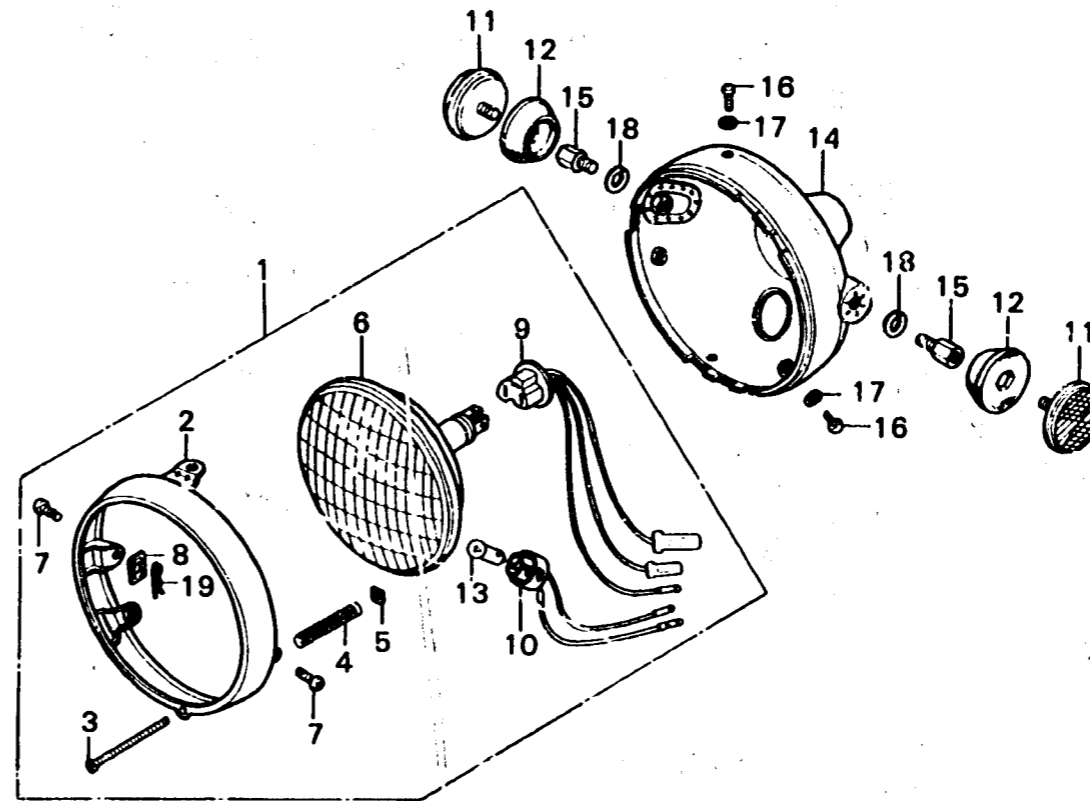


G 13

F-3-1

**Headlight
(DK,DM,U,K1-E)**



R371-18-1

Service item	F.R.T.	Ref. No.	Part No.	Description	Reqd. No.		Serial No.	Area code
					3L1000	GL1000 LTD K1 K2		
HEAD LIGHT CASE	0.3	1	33100-375-003	HEADLIGHT ASSY. (12V 50/40W)	1	1 1		DK,DM,U
HEAD LIGHT UNIT and its related parts	0.2					1		E
HEAD LIGHT ASSY./SOCKET/BULB/ MARKER LIGHT SOCKET	0.1	2	33100-371-951 33101-300-043	HEADLIGHT ASSY. RIM, HEADLIGHT	1	1 1		U DK,DM,U
		3	33101-371-951 33103-346-670	RIM, HEAD LIGHT SCREW, BEAM ADJUST	1	1 1		E U DK,DM,U
		4	33103-371-980 33107-300-003	SCREW, BEAM ADJUST SPRING, HEADLIGHT BEAM ADJUSTING	1	1 1 1		E U DK,DM,U
		5	33117-001-023	NUT, HEADLIGHT BEAM ADJUSTING	1	1 1 1		E DK,DM,U E
		6	33120-375-003	HEADLIGHT UNIT	1	1 1 1		DK,DM,U
		7	33125-087-761	SCREW, UNIT HOLDER	2	2 2 2		E DK,DM,U
		8	33128-292-670	NUT, UNIT HOLDER	2	2 2 2		E DK,DM,U
		9	33130-323-003	SOCKET COMP., HEADLIGHT	1	1 1 1		E DK,DM,U
		10	33170-323-003	SOCKET COMP., MARKER LIGHT	1	1 1 1		E DK,DM,U E
		11	33741-340-670 33741-371-980	REFLECTOR, FR. REFLEX REFLECTOR, FR. REFLEX	2	2 2 2		DK,DM,U E U

1979.04.10

G13