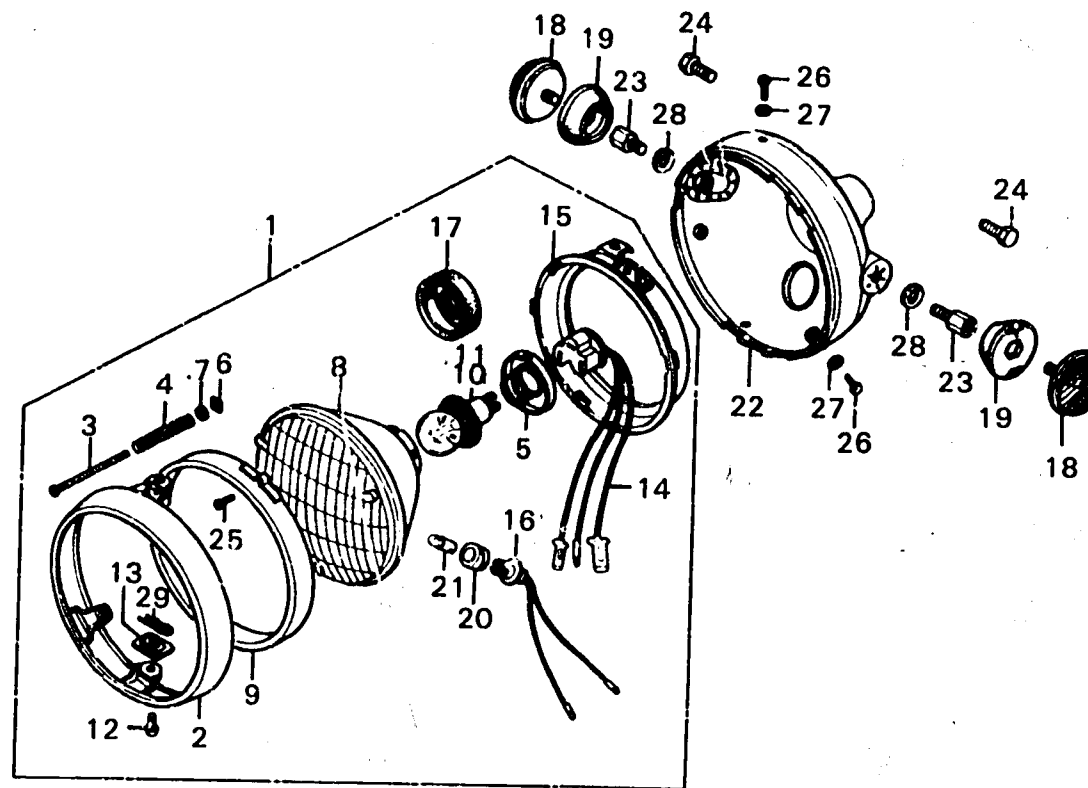


**G 15**

**F-3-2**

**Headlight  
(ED,F,G,K2-E)**



B371-18-2A

Service item	F.R.T.	Ref. No.	Part No.	Description	Reqd. No.		Serial No.	Area code
					GL1000	GL1000 LTD K1 K2		
HEAD LIGHT CASE	0.3	1	33100-371-961	HEADLIGHT ASSY.	1			ED,G
HEAD LIGHT UNIT and its related parts	0.2		33100-371-971	HEADLIGHT ASSY.	1			F
HEAD LIGHT ASSY./SOCKET/BULB/ MARKER LIGHT SOCKET	0.1		33100-390-611	HEADLIGHT ASSY. (12V 45/40W STANLEY)		1		ED,G
			33100-390-621	HEADLIGHT ASSY. (12V 45/40W STANLEY)		1		F
			33100-371-601	HEADLIGHT ASSY.		1		E
			33100-371-611	HEADLIGHT ASSY.		1		ED,G
			33100-371-621	HEADLIGHT ASSY.		1		F
		2	33101-300-673	RIM, HEADLIGHT		1		ED,F,G
			33101-371-980	RIM, HEADLIGHT	1			ED,F,G
			33101-405-671	RIM, HEADLIGHT		1		E,ED,F,G
		3	33103-346-670	SCREW, BEAM ADJUST		1		ED,F,G
			33103-371-960	SCREW, BEAM ADJUST	1			E
		4	33107-300-303	SPRING, HEADLIGHT BEAM ADJUSTING	1	1	1	ED,F,G
			33114-390-611	HOLDER, HEADLIGHT SOCKET	1	1		ED,F,G
		6	33117-001-023	NUT, HEADLIGHT BEAM ADJUSTING	1	1	1	ED,F,G
			33119-371-003	WASHER, BEAM ADJUST		1		E
		7	33119-371-003	WASHER, BEAM ADJUST	1	1	1	ED,F,G
			33120-390-611	HEADLIGHT UNIT		1		E
			33120-371-601	HEADLIGHT UNIT	1	1		ED,F,G
			33120-371-611	HEADLIGHT UNIT		1		E
		9	33121-371-980	RING, RETAINING		1		ED,F,G
			33121-375-671	RING, RETAINING	1			ED,F,G
			33121-405-671	RING, RETAINING		1	1	ED,F,G E,ED,F,G

1979.04.20

G15