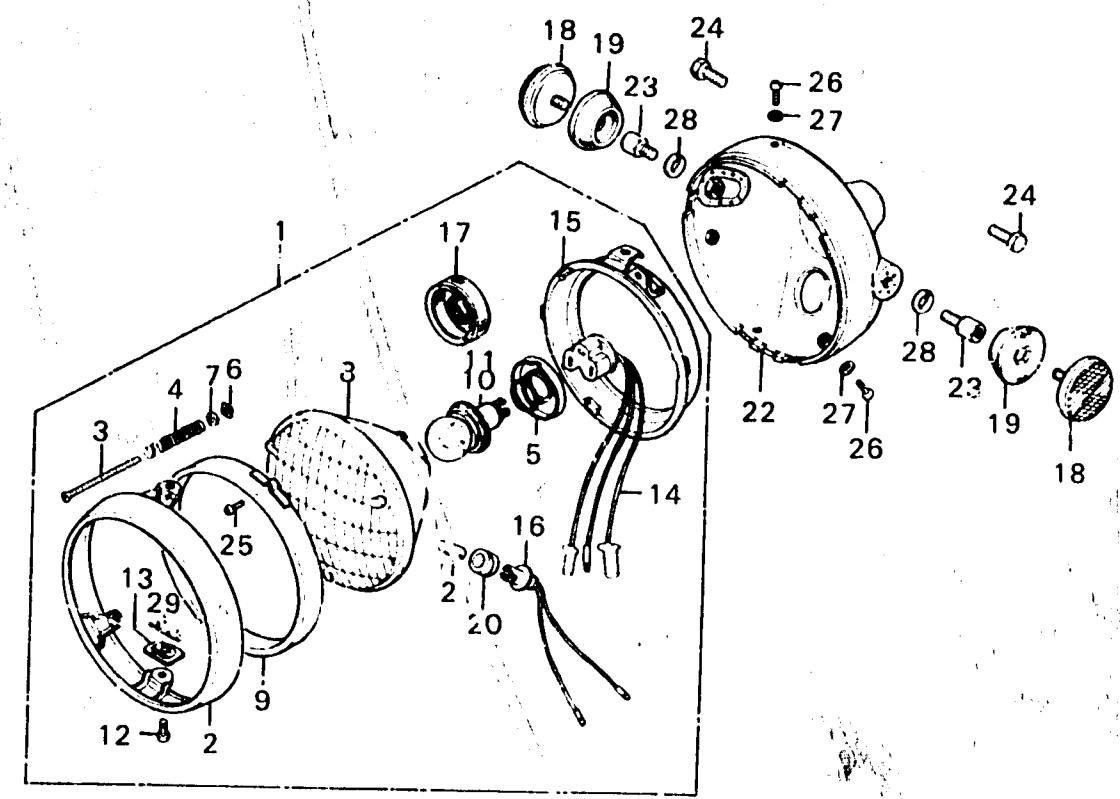


G 16

F-3-2

**Headlight
(ED,F,G,K2-E)**



B371-18-2A

| Service item | F.R.T. | Ref. No. | Part No. | Description | Reqd. No. | | Serial No. | Area code |
|--------------|--------|----------|----------------|--|-----------|--------------------|------------|-----------|
| | | | | | GL1000 | GL1000 LTDK1 K2 | | |
| | | 10 | 33122-623-621 | BULB, HEADLIGHT (12V 45/40W) | | 1 | | F |
| | | 11 | 33122-623-621 | BULB, HEADLIGHT (12V 45/40W) | | 1 | | F |
| | | | 33122-623-721 | BULB, HEADLIGHT (12V 45/40W) (LOCAL PROCUREMENT PART) | | 1 | | E,ED,G |
| | | | 34901-371-601 | H4 BULB(12342/99) MFD. BY PHILIPS (LOCAL PROCUREMENT PART) | | 1 | | E,ED,G |
| | | | 34901-371-621 | H4 BULB(12342/99) MFD. BY PHILIPS (LOCAL PROCUREMENT PART) | | 1 | | F |
| | | 12 | 33125-087-621 | SCREW, UNIT HOLDER | 2 | 2 | | ED,F,G |
| | | | 93500-05008-0H | SCREW, PAN, 5X8 | | | | E,ED,F,G |
| | | 13 | 33128-292-670 | NUT, UNIT HOLDER | 2 | 2 | | ED,F,G |
| | | 14 | 33130-300-671 | SOCKET COMP., HEADLIGHT CORD | 1 | 1 | | E |
| | | | | | | | | ED,F,G |
| | | 15 | 33153-375-671 | RING, MOUNTING | 1 | 1 | | E |
| | | | | | | | | ED,F,G |
| | | | | | | | | C |
| | | 16 | 33170-390-611 | SOCKET COMP., MARKER LIGHT | 1 | 1 | | ED,F,G |
| | | 17 | 33180-371-601 | COVER, BULB | | 1 | | E |
| | | 18 | 33741-371-980 | REFLECTOR, FR, REFLEX | 2 | | | E,ED,F,G |
| | | | 33741-340-670 | REFLECTOR, FR, REFLEX | | | | ED,G |
| | | | | | 2 | 2 | | ED,G |
| | | 19 | 33743-375-000 | BASE, FR, REFLECTOR | 2 | 2 | | E |
| | | | | | | | | ED,G |
| | | 20 | 33905-303-003 | RUBBER, JOINT (STANLEY) | 1 | 1 | | E |
| | | | 33905-371-601 | RUBBER, JOINT | | | | ED,F,G |
| | | | | | | 1 | | E,ED,F,G |

1979.04.10

G16