

4. Upon noting that the pointers of two vacuum gauges remain between **16** and **24 cmHg**, snap the engine two or three times.
If the pointers come outside the specification, repeat the step 3 above.
- * If the pointers are below 15 cmHg, check the following items.
 - (1) Ignition timing (see page 18)
 - (2) Tappet clearance (see page 17)
 - (3) Spark plug gap (see page 102)
 - (4) Compression pressure (see page 30)

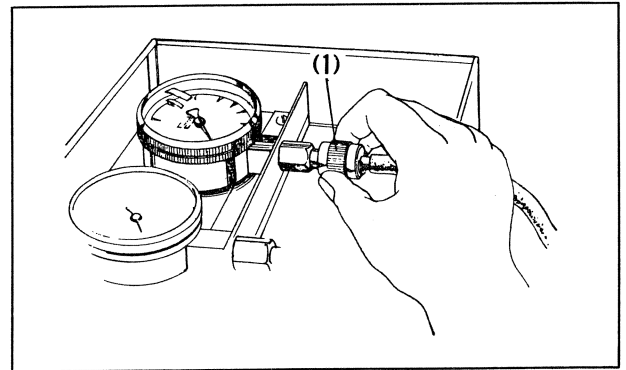


Fig. 3-14 (1) Vacuum gauge adjuster

5. Upon noting that the vacuum of the two carburetors reach the specified value, turn the throttle stop screw to obtain the standard idle speed.
6. Adjust each carburetor with the pilot screw.
7. Turn the throttle stop screw to again adjust the idle speed to **1,200 rpm**

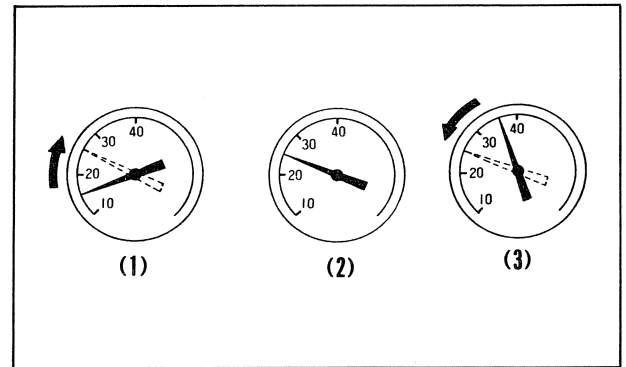


Fig. 3-15 (1) High speed (throttle too open)
(2) Standard
(3) Low speed (throttle too closed)

4. THROTTLE CABLE

Two control cables connect the throttle grip to a linkage on the carburetor operating bar. One cable opens the throttle valves, while the other cable ensures positive closure.

Standard throttle grip play is approximately 10-15° of grip rotation. This play can be adjusted at the grip play adjuster and also with the cable adjuster at the lower end of the opening cable at the throttle crank. To adjust, loosen the lock nut and turn the adjuster. Tighten the lock nut upon completion of adjustment and check for smooth operation of throttle grip through the engine range from full open to full close with the handlebar set to the extreme right and left steering positions.

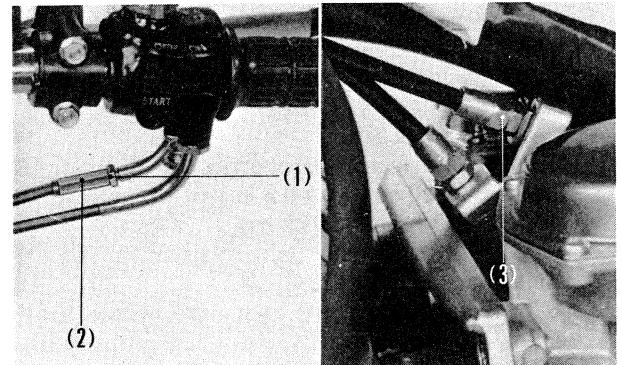


Fig. 3-16 (1) Lock nut
(2) Grip play adjuster
(3) Cable adjuster