

**Installation**

To install the engine, reverse the removal procedures.

1. Install the engine on the frame from right side so that it is slightly inclined forward.
  - \* Make sure that the starting motor cable is not binding.
  - \* Position the engine bottom hanger correctly before tightening the bolts.
2. Install the engine hanger bolts as shown in the figure below.

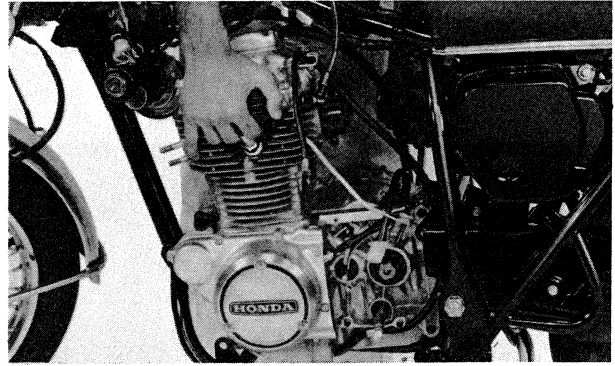


Fig. 4-1

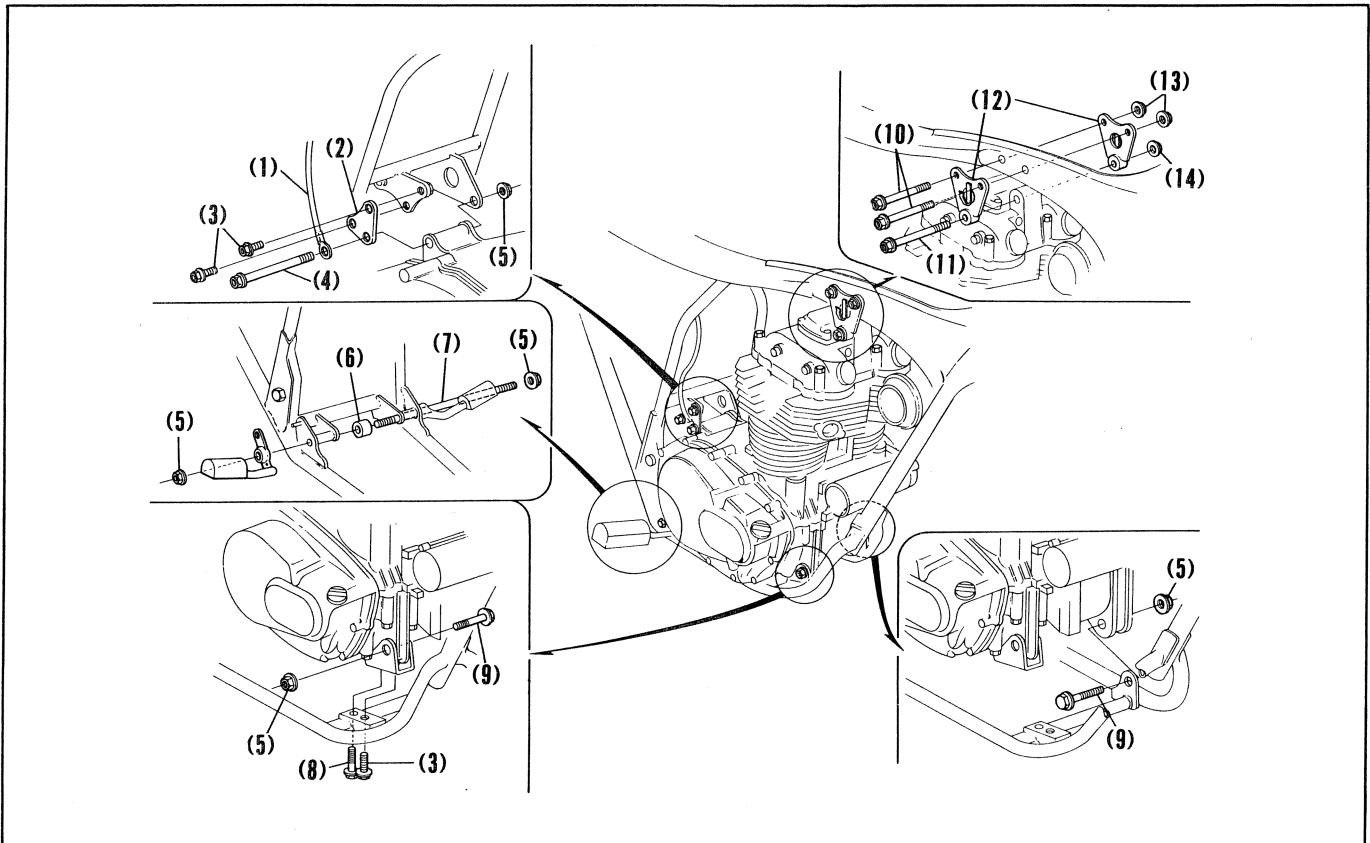


Fig. 4-2 (1) Battery ground cable (2) Engine hanger plate (3) 8 x14 UBS bolt (4) 10 x 110 UBS bolt (5) 10 mm UBS nut (6) Engine side collar (7) Rear engine lower hanger bolt (8) 8 x 45 UBS bolt (9) 10 x 45 UBS bolt (10) 8 mm UBS bolt (11) 8 x 85 flanged bolt (12) Engine upper hanger (13) 8 mm UBS nut (14) 8 mm nut

3. The threaded part of each engine rear hanger bolt with which the foot rest is tightened, must be identical in length.

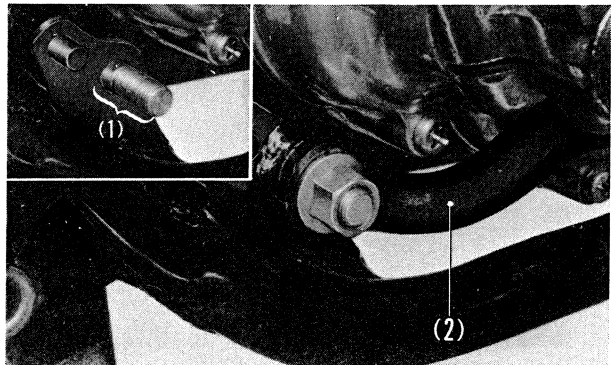


Fig. 4-3 (1) Engine rear hanger bolts (Threaded parts are identical in length.) (2) Foot rest