



COOLER

INSPECTION

Inspect the oil cooler soldered joints and seams for leaks.

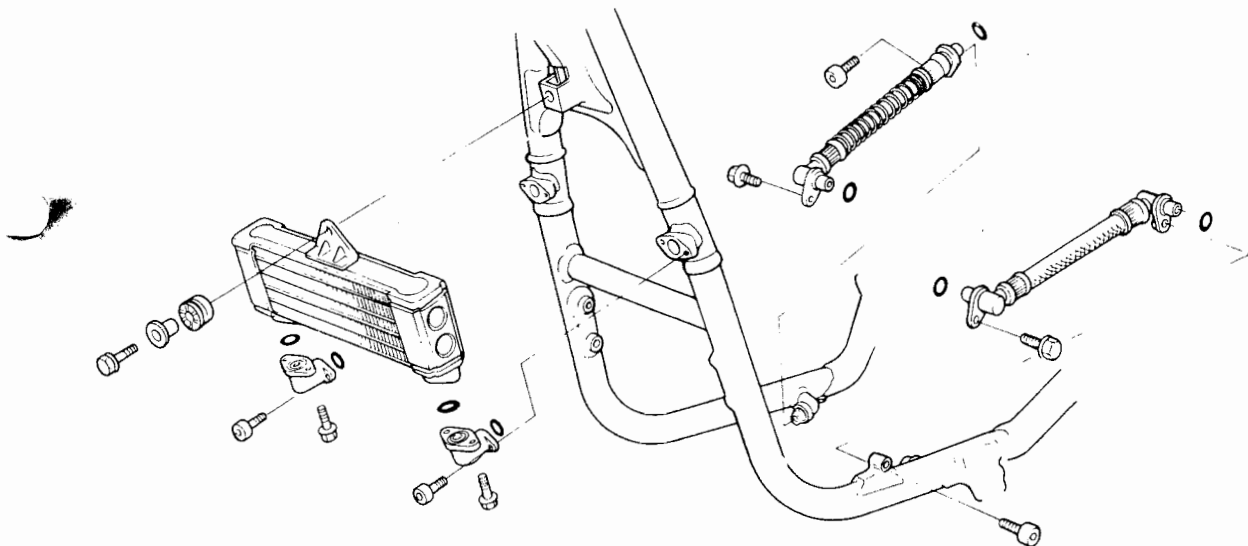
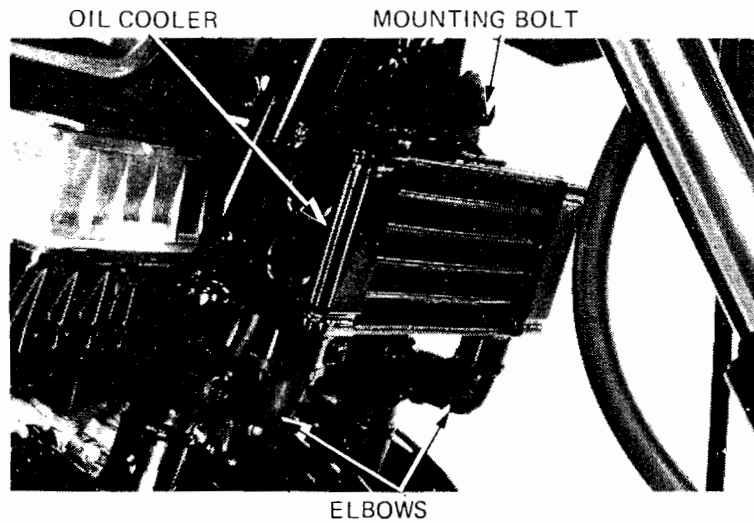
Blow dirt out from between core fins with compressed air. If insects, etc., are clogging the oil cooler, wash them off with low pressure water. Carefully straighten any bent fins.

REMOVAL

Drain the engine oil (Page 2-3).

Disconnect the inlet and outlet elbows by removing the socket bolts.

Remove the oil cooler mounting bolt and the oil cooler from the frame.



"UP" MARK

INSTALLATION

Replace the O-rings on the elbows with new ones.

Install the oil cooler elbows to the oil cooler with their "UP" marks facing up.

Connect the oil cooler elbows to the frame down tubes and tighten the four socket bolts.

TORQUE: 10–15 N·m
(1.0–1.5 kg·m, 7–11 ft·lb)

Tighten the oil cooler mounting bolt.

Fill the crankcase with the recommended oil (Page 2-3).

Start the engine and check for oil leaks.

