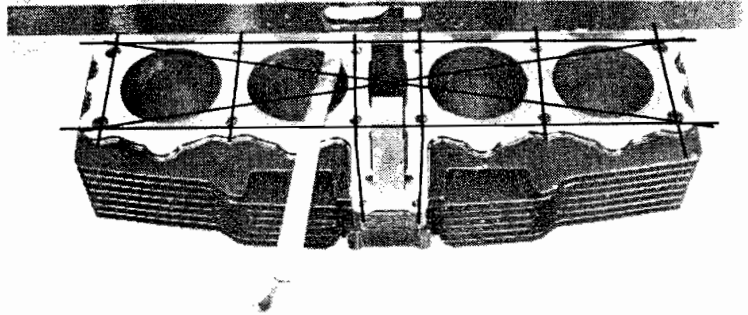




Inspect the top of the cylinder for warpage. Check in an X pattern as shown.

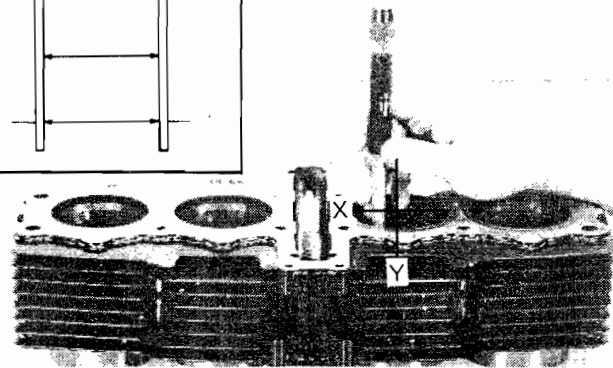
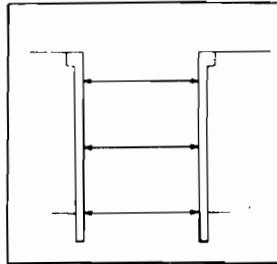
SERVICE LIMIT: 0.10 mm (0.004 in)



Inspect the cylinder bores for wear or damage.

Measure the cylinder I.D. at the three levels shown in both X and Y directions.

SERVICE LIMIT: 67.10 mm (2.642 in)



PISTON REMOVAL

Place rags in the crankcase openings.
Remove each piston pin clip with needle nose pliers being careful not to allow clips to fall into the crankcase.

Press the piston pins out.

Mark each piston to indicate its cylinder position for reassembly.

