

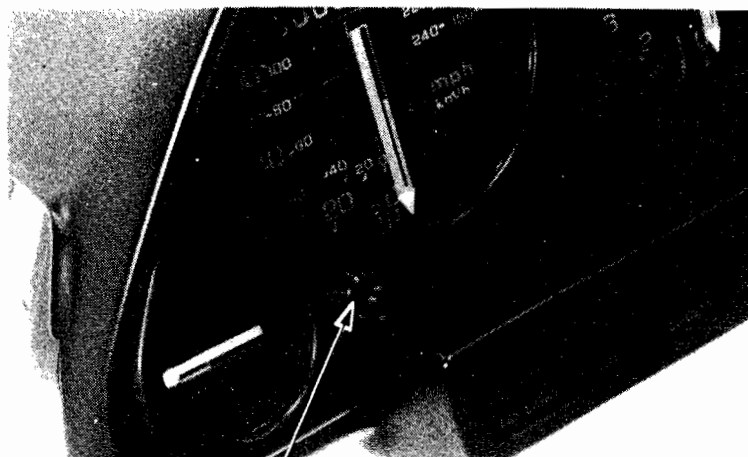


DISASSEMBLY

CAUTION

Do not leave the instruments upside down or damping fluid will leak onto the inside of the lens.

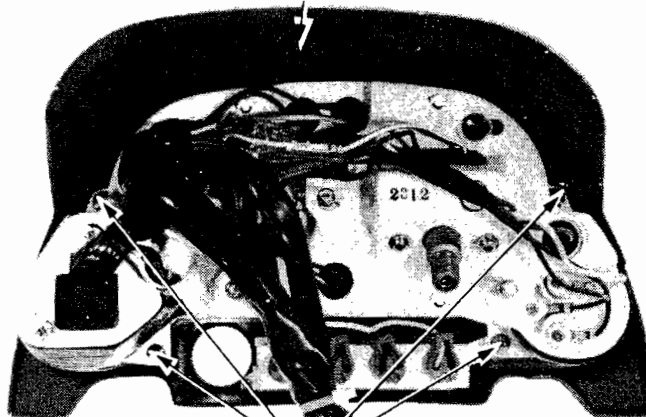
Remove the odometer reset knob.



ODOMETER RESET KNOB

Remove the cover from the instruments by removing the screws.

INSTRUMENT COVER



SCREWS

Remove the each instrument by removing the screws and bulb sockets.

