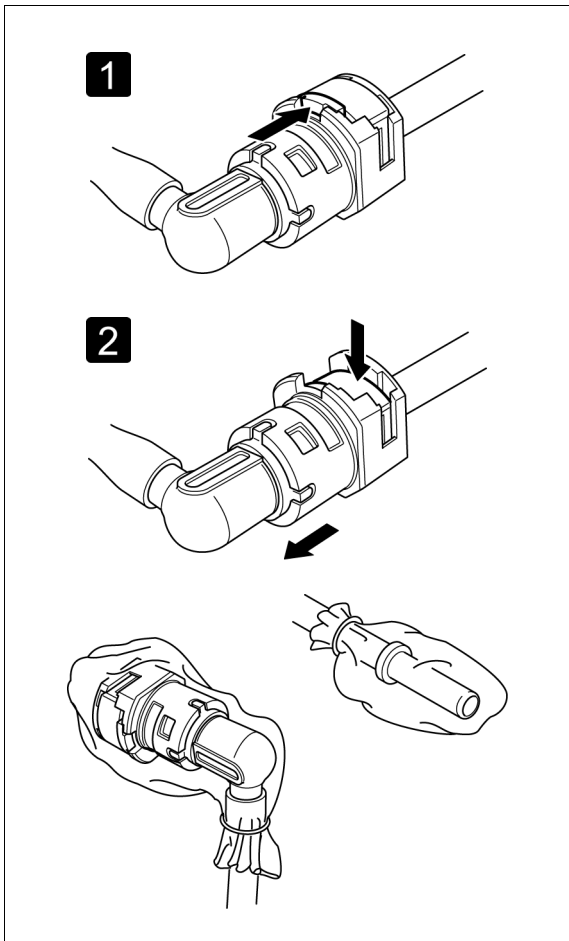
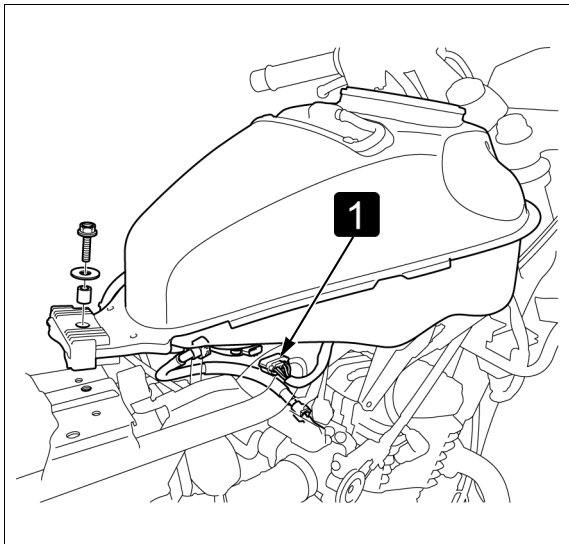




FUEL LINE



- This vehicle uses resin for the part of materials in the fuel feed hose. Do not bend or twist the fuel feed hose.
- Fuel tank center cover →3-7
- **1** Fuel pump 5P connector
- Let the engine idle until it stops.



- Battery negative (-) cable →4-28

- Do not use tools in removal. If the connector does not move, alternately pull and push the connector until it comes off easily.
- Check the fuel quick connect fitting for dirt, and clean if necessary.
- Place a shop towel over the quick connect fitting.



- **1** Push the retainer tab forward.
- **2** Press down the retainer and disconnect the connector from the fuel pump joint/injector joint.
- Check the retainer condition and replace the fuel hose if necessary.
- To prevent damage and keep foreign matter out, cover the disconnected connector and pipe end with the plastic bags.



- Press the connector onto the fuel joint until the retainer locks with a "CLICK". If it is hard to connect, put a small amount of engine oil on the pipe end.
- Make sure the connection is secure; check visually and by pulling the connector.
- After installing the removed parts, turn the ignition switch ON. (Do not start the engine.)
The fuel pump will run for about 2 seconds, and fuel pressure will rise. Repeat 2 or 3 times, and check that there is no leakage in the fuel supply system.