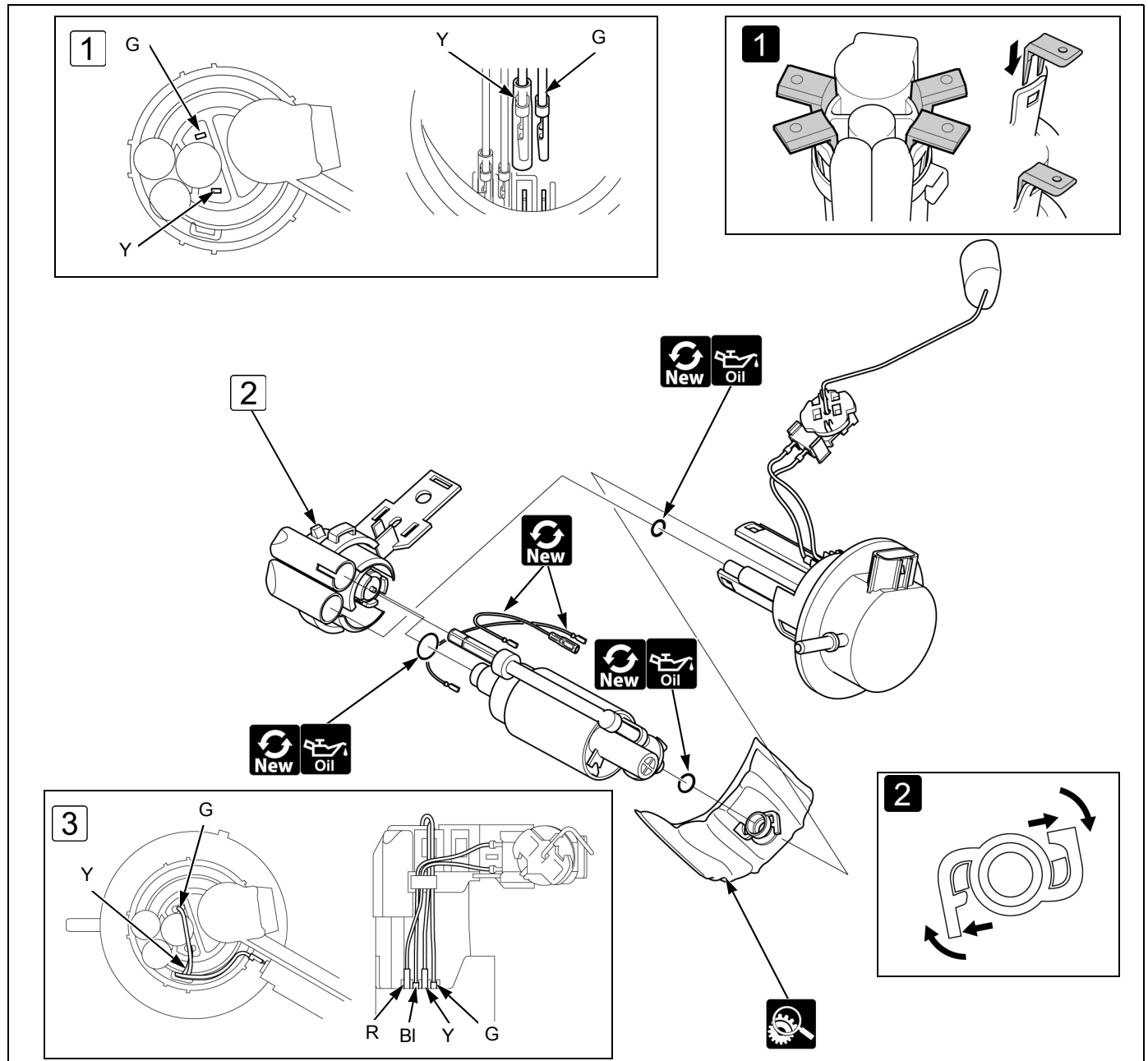




FUEL FILTER



- To prevent dirt and debris from entering the fuel pump unit, always clean it before disassembly.
- Clean the fuel pump unit and fuel pump filter with clean gasoline. Never use commercially available carburetor cleaners.

• **1** Release the hooks from the stoppers by slightly spreading the hooks using the special tool.

Fuel pump case remover: 070MF-KVS0300

• **2** Release the hooks from the stoppers by slightly spreading the hooks, and then turn it clockwise.



- Fuel filter clog or excessive damage
- If the fuel filter is clogged, replace it with a new one.



• Before installing the fuel pump filter, check the fuel pump unit for dirt. If necessary, clean the fuel pump unit with compressed air. Do not blow into the fuel pump unit.

• If the R or BI wire connector is disconnected, replace the fuel level sensor with a new one.

• **1** Connect the fuel pump motor wires to the specified position.

• **2** Make sure the "CLICK" when the fuel pump unit is assembled.

• **3** Route the fuel pump motor wires and fuel level sensor wires to the guide and terminals properly.

• If the fuel filter is changed, the ECM must be initialized. →2-10