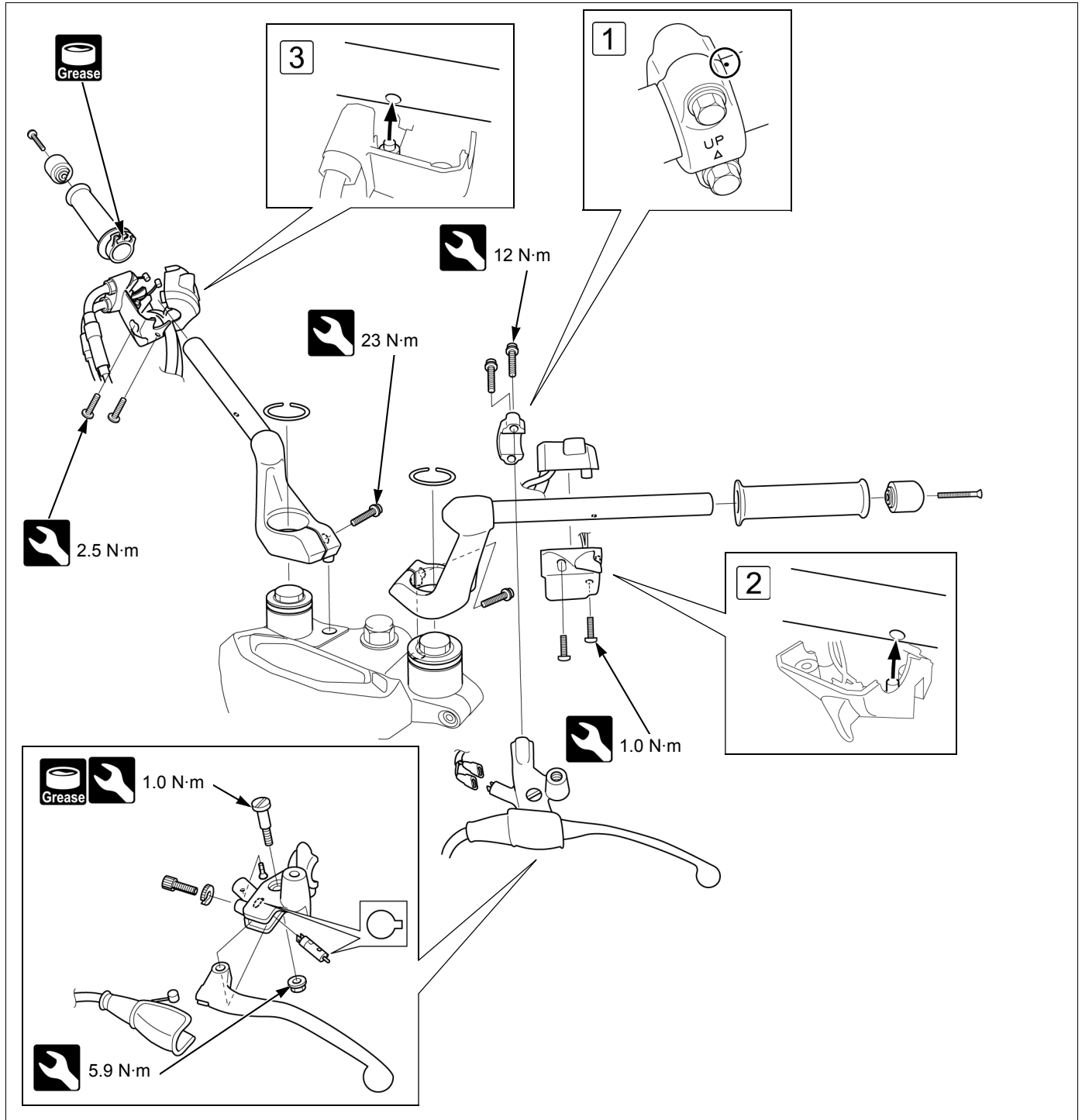




# HANDLEBAR



- Front brake master cylinder → 3-26
- Rearview mirror → 3-3
- ① Install the clutch lever bracket and holder with the "UP" mark facing up. Align the edge of the clutch lever bracket with the punch mark on the handlebar.
- ② Install the left handlebar switch housing while aligning the locating pin in the housing with the hole in the handlebar.
- ③ Install the throttle pipe housing while aligning its locating pin with the hole on the handlebar.