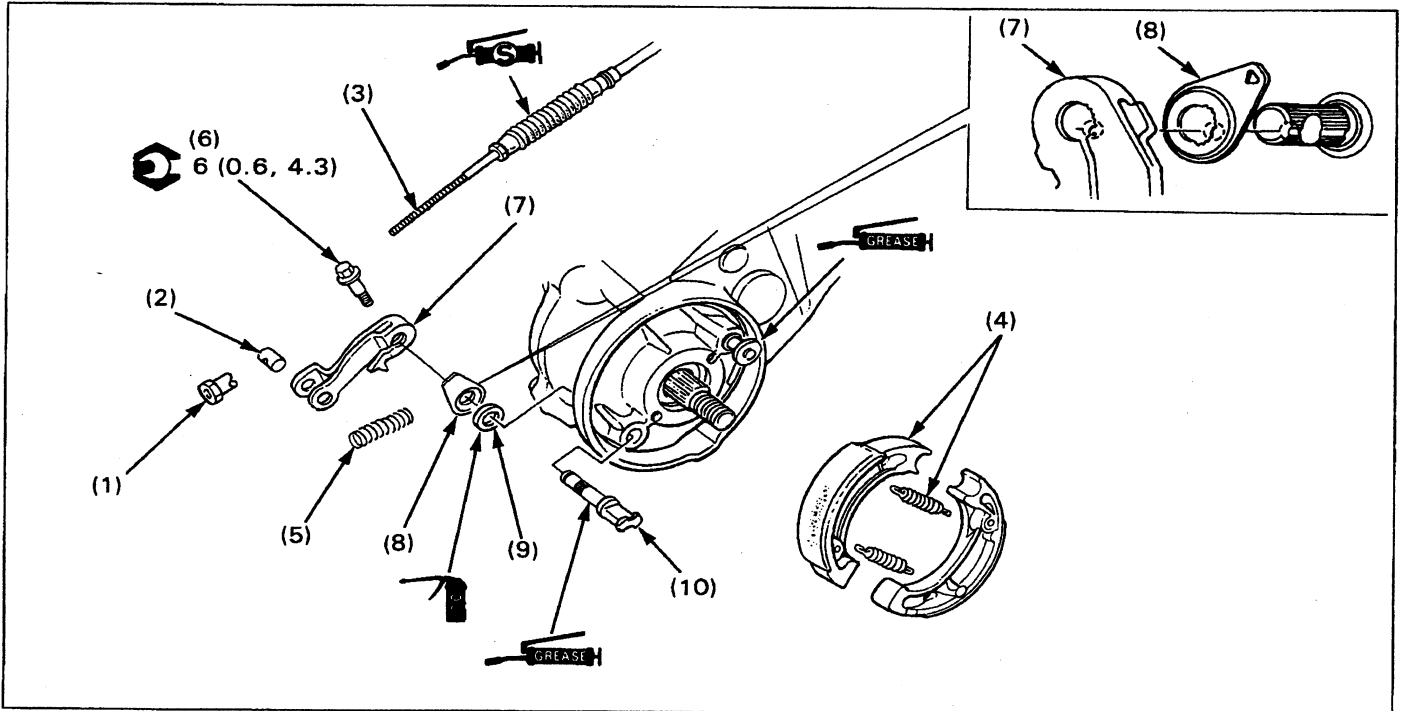


Rear Brake Disassembly/Assembly



NOTE

• After installing the rear wheel, adjust the rear brake.

Requisite Service

• Rear wheel removal/installation (page 12-2)

Procedure	Q'ty	Remarks
Disassembly Order		Assembly is in the reverse order of disassembly.
(1) Rear brake adjusting nut	1	
(2) Rear brake cable	1	
(3) Brake arm joint	1	
(4) Brake shoe/shoe spring	2/2	
(5) Return spring	1	
(6) Brake arm bolt	1	
(7) Brake arm	1	When installing, align the punch mark with the wide groove in the brake cam.
(8) Wear indicator	1	
(9) Felt seal	1	
(10) Brake cam	1	