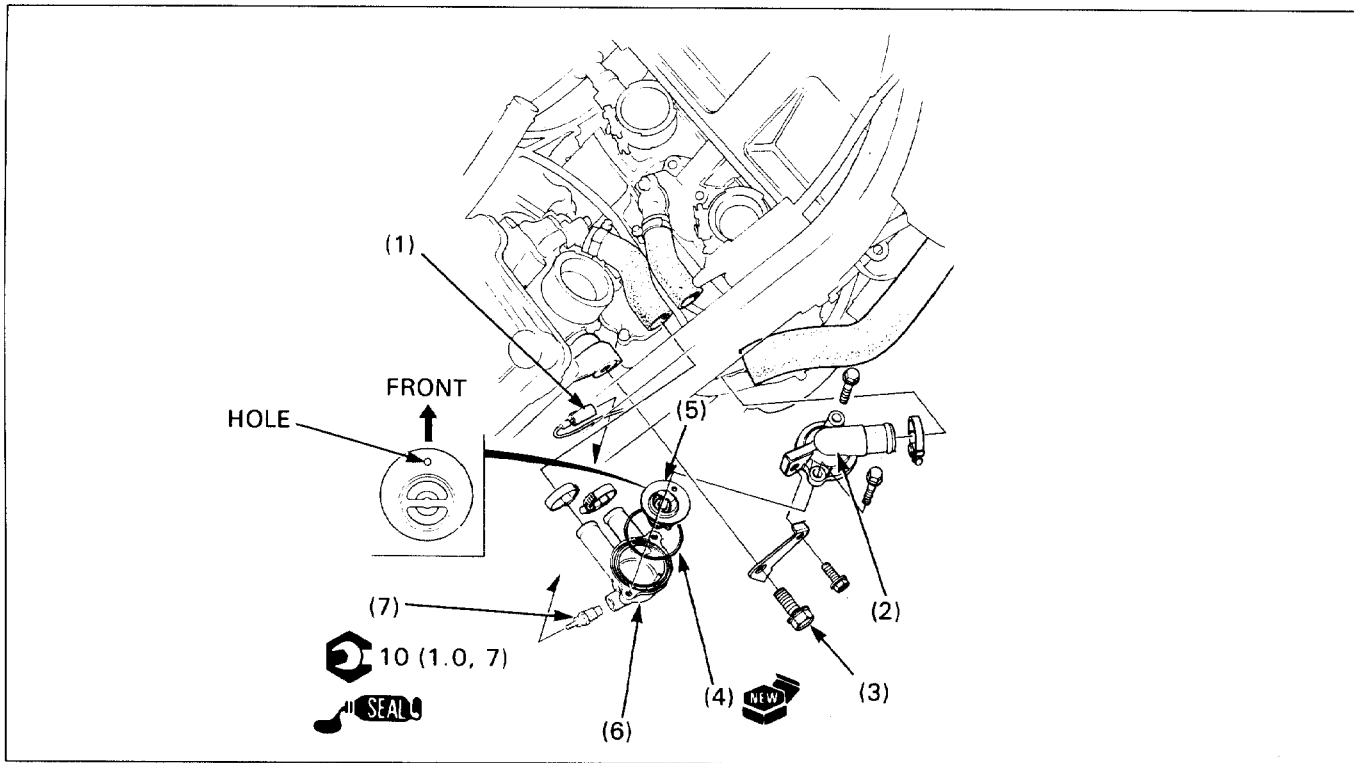


## Thermostat Removal/Installation



### Requisite Service

- Fuel tank removal/installation (page 2-22)
- Coolant refill (section 5 of the Common Service Manual)
- Coolant draining (page 5-3)
- Carburetor removal/installation (page 6-4)

Procedure	Q'ty	Remarks
<b>Removal Order</b>		• Installation is in the reverse order of removal.
(1) Thermosensor connector	1	
(2) Thermostat cover	1	After inserting into the radiator hose, secure it by tightening the hose band screw.
(3) Thermostat cover mounting bolt	1	
(4) O-ring	1	
(5) Thermostat	1	Install the thermostat with its hole forwards.
(6) Thermostat housing	1	After inserting into the water hoses, secure by tightening the hose band screw.
(7) Thermosensor	1	At installation, apply sealant to the threads.