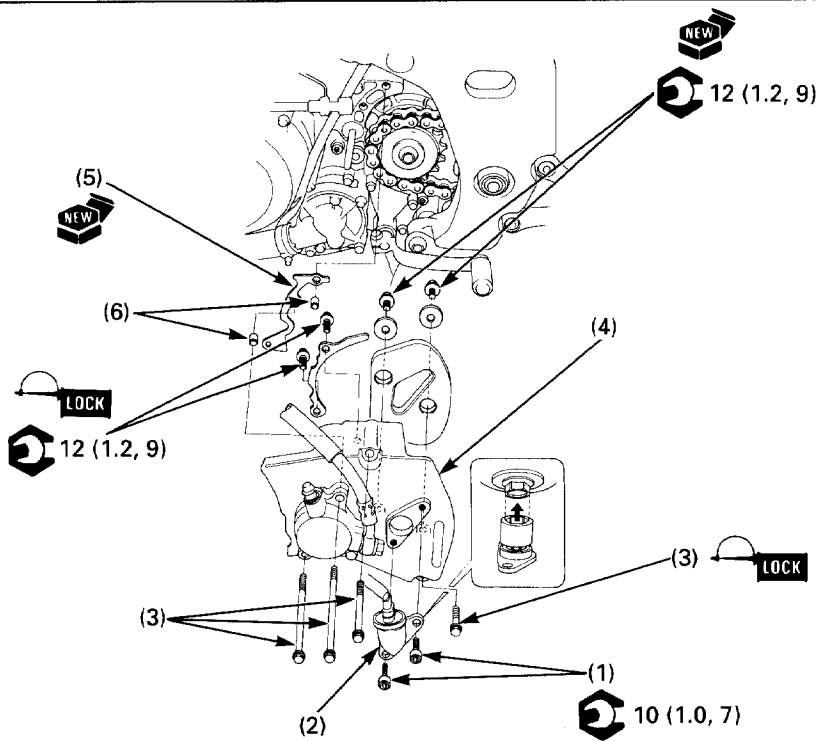


After '93:



**Requisite Service**

- Lower fairing removal/installation (page 2-7)

Procedure		Q'ty	Remarks
(1)	<b>Removal Order</b> Bolt	2	Installation is in the reverse order of removal.  When installing, fit the hexagonal joint on the drive sprocket bolt head.
(2)	Speed sensor	1	
(3)	Bolt	4	
(4)	Drive sprocket cover	1	
(5)	Gasket	1	
(6)	Dowel pin	2	