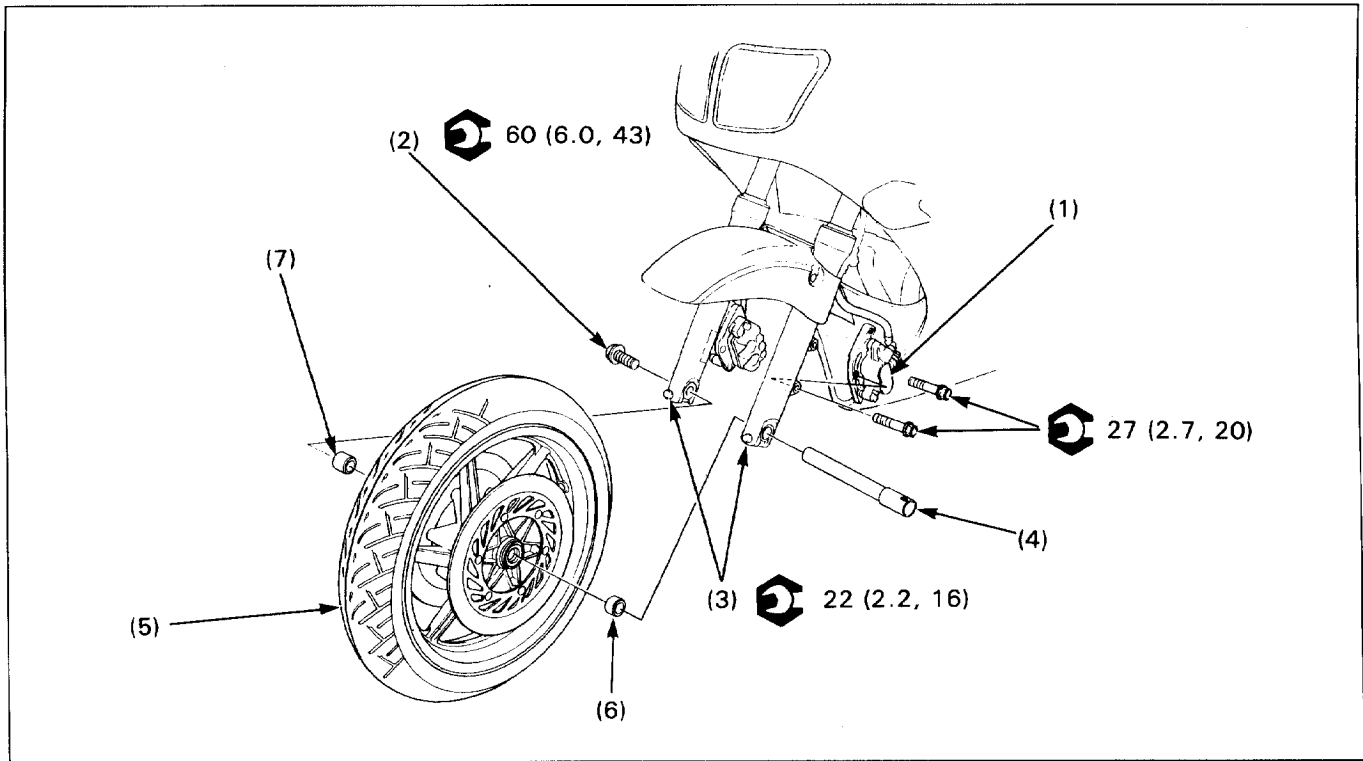


Front Wheel Removal/Installation



WARNING

- A contaminated brake disc or pad reduces stopping power. Discard contaminated pads and clean a contaminated disc with a high quality brake degreasing agent.
- Inhaled asbestos fibers have been found to cause respiratory disease and cancer. Never use an air hose or dry brush to clean brake assemblies. Use an OSHA-approved vacuum cleaner or alternate method approved by OSHA designed to minimize the hazard caused by airborne asbestos fibers.
- Failure to provide adequate disc to caliper holder clearance may damage the brake disc and impair braking efficiency; refer to the owner's manual for caliper holder clearance adjustment.

CAUTION

- Support the caliper assembly so that it does not hang on the brake hose. Do not twist the brake hose.

NOTE

- Do not depress the brake lever when the caliper is removed, or it will be difficult to refit the disc between the brake pads.

Requisite Service

- Raise the front wheel off the ground by placing a jack or other support under the engine.

Procedure	Q'ty	Remarks
Removal Order		• Installation is in the reverse order of removal.
(1) Left brake caliper assembly	1	After removing, hang it on a piece of wire from the frame.
(2) Axle bolt	1	
(3) Axle pinch bolt	2	Only loosen the bolts.
(4) Axle shaft	1	
(5) Front wheel assembly	1	When installing, be careful not to damage the brake pads with the disc.
(6) Left side collar	1	Shorter one
(7) Right side collar	1	Longer one