

ENGINE REMOVAL/INSTALLATION

ENGINE INSTALLATION

Engine installation is essentially the reverse of removal.

Use a floor jack or other adjustable support to carefully maneuver the engine into place.

CAUTION:

Carefully align mounting points with the jack to prevent damage to mounting bolt threads and wire harness and cables.

Tighten the all fasteners to the specified torque:

ENGINE MOUNT BOLTS:

12 mm 60–80 N·m (6.0–8.0 kg-m, 43–58 ft-lb)

10 mm 45–60 N·m (4.5–6.0 kg-m, 33–42 ft-lb)

8 mm 20–30 N·m (2.0–3.0 kg-m, 14–22 ft-lb)

SUB-FRAME BOLTS:

Upper 70–80 N·m

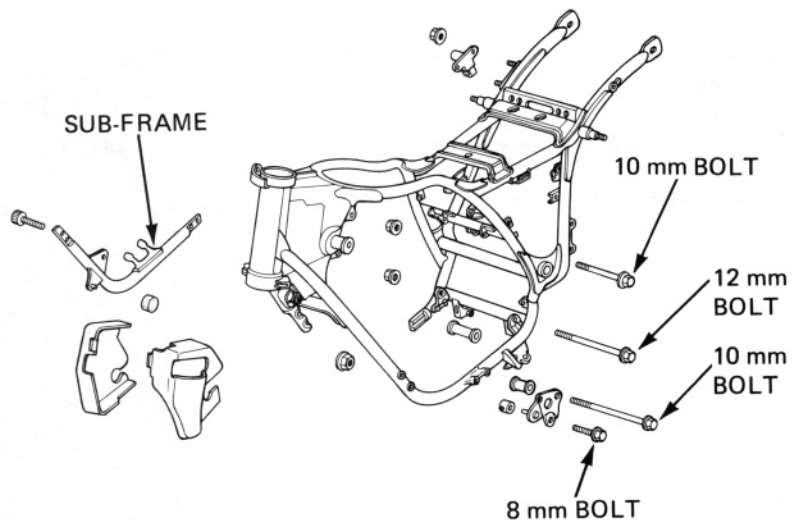
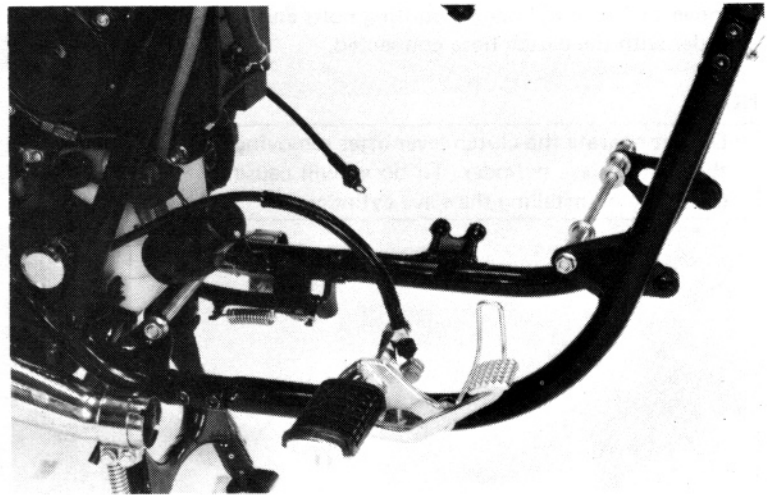
(7.0–8.0 kg-m, 51–58 ft-lb)

Lower 35–45 N·m

(3.5–4.5 kg-m, 25–33 ft-lb)

NOTE:

- Route the wires and cables properly (page 1-9).
- Fill the crankcase to the proper level with the recommended oil (page 2-1).
- Fill the cooling system (page 6-3).
- Perform the following inspection and adjustments:
 - Throttle operation (page 3-5).
 - Clutch (page 3-5).



Install the exhaust system:

Install new exhaust pipe joint gaskets.

Install the exhaust pipes and tighten the joint nuts and clamp bolts.

TORQUE: JOINT NUTS: 8–14 N·m (0.8–1.4 kg-m, 6–10 ft-lb)

CLAMP BOLTS: 18–28 N·m (1.8–2.8 kg-m, 13–20 ft-lb)

