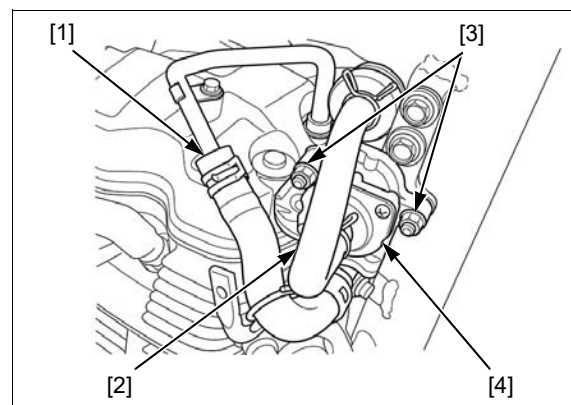


Disconnect the PAIR control valve-to-cylinder head cover hose [1] and sub air filter-to-PAIR control valve hose [2].

Remove the nuts [3] and PAIR control valve [4].

Installation is in the reverse order of removal.



AIR SUCTION PIPE REMOVAL/INSTALLATION

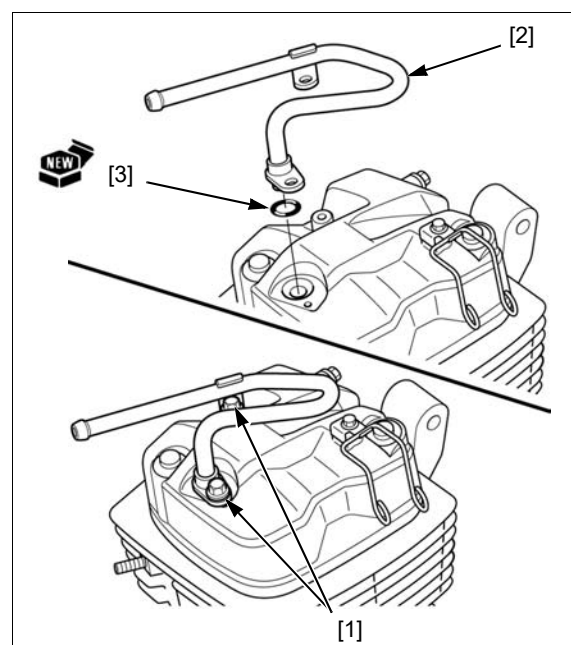
Remove the PAIR control valve (page 6-14).

Remove the bolts [1] and air suction pipe [2].

Remove the O-ring [3] from the cylinder head cover.

Replace the O-ring with new one.

Installation is in the reverse order of removal.



RESONATOR TANK AND AIR INLET COVER REMOVAL/INSTALLATION

Remove the side shroud (page 2-4).

Disconnect the air inlet cover-to-three way joint hose [1].

Remove the bolt [2] and air inlet cover [3].

Disconnect resonator tank-to-three way joint hose [4].

Remove the bolt [5] and resonator tank [6].

Installation is in the reverse order of removal.

