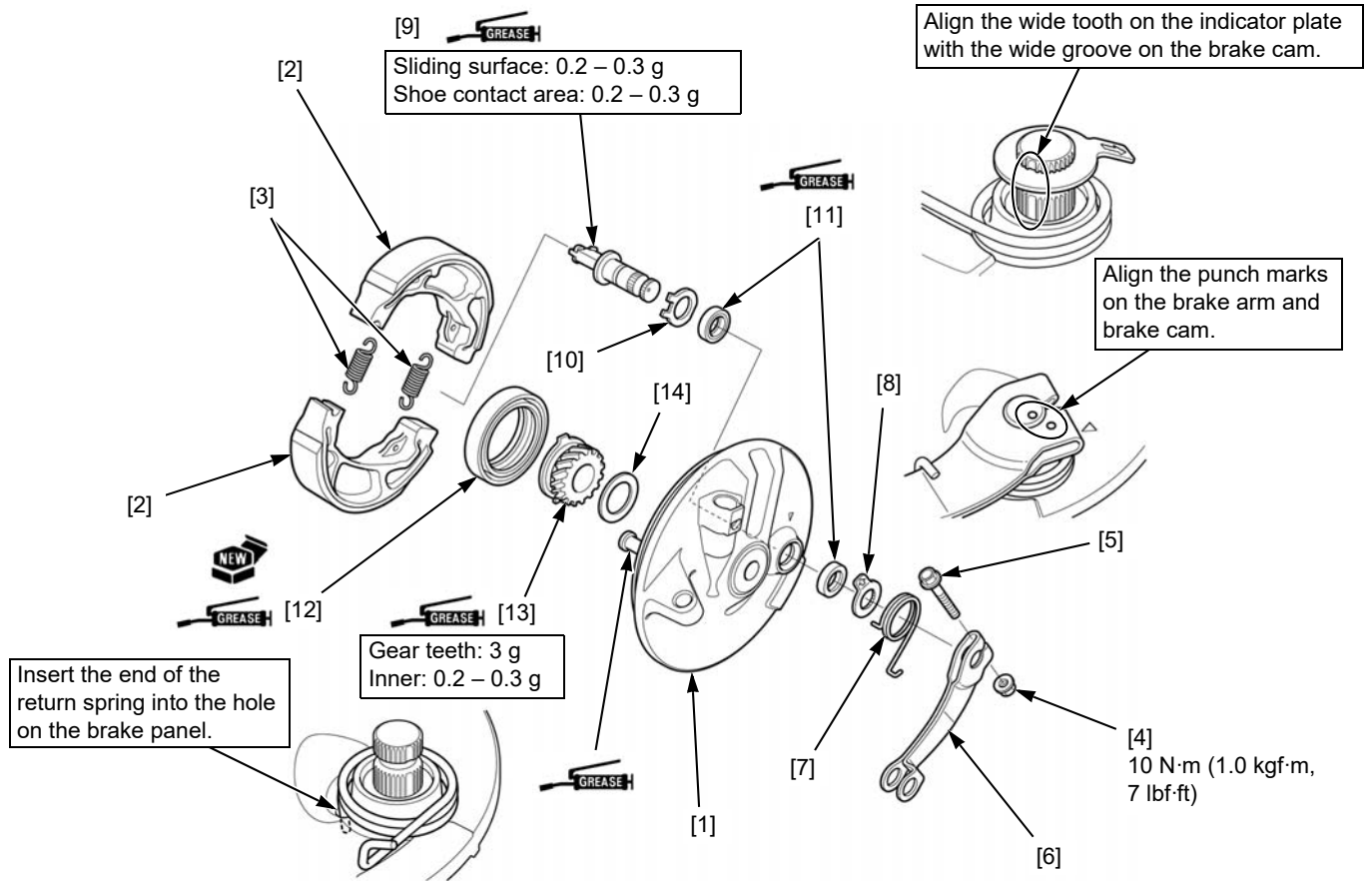


FRONT DRUM BRAKE (XL125LK)

DISASSEMBLY/ASSEMBLY

Remove/install the front wheel (page 14-9).

Disassemble and assemble the brake pedal as following illustration.



- Brake panel [1]
- Nut [4]
- Return spring [7]
- Retainer [10]
- Speedometer gear [13]
- Brake shoes [2]
- Brake arm bolt [5]
- Indicator plate [8]
- Brake cam dust seals [11]
- Shim [14]
- Brake shoe springs [3]
- Brake arm [6]
- Brake cam [9]
- Brake panel dust seal [12]

- Adjust the front brake lever freeplay (page 3-13).

FORK

REMOVAL

Remove the front wheel (page 14-9).

Support the caliper so it does not hang from the brake hose. Do not twist the brake hose.

Remove the following (XR125LK/LEK left fork only):

- Brake hose clamp cover [1]
- Bolts [2] and brake hose clamps [3]
- Bolts [4] and brake caliper [5]

