

**ASSEMBLY**

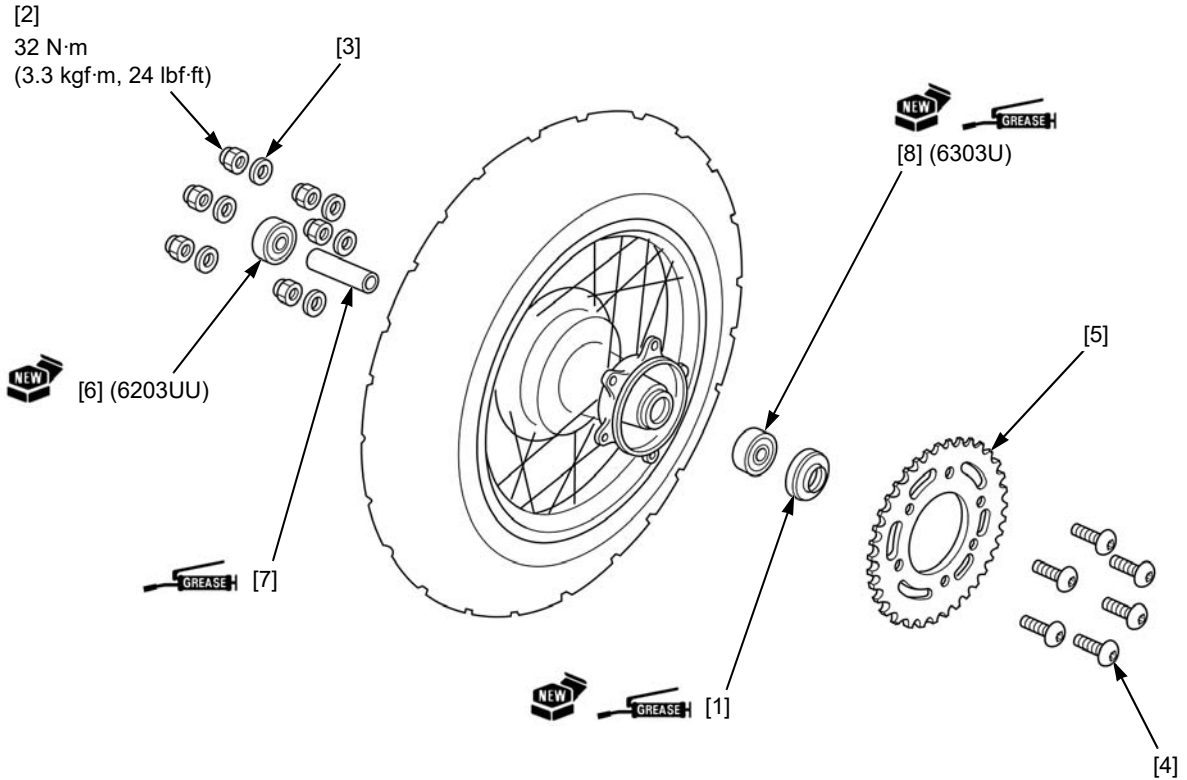
Remove/install the following:

- Dust seal [1]
- Bolts [4]
- Distance collar [7]
- Nuts [2]
- Driven sprocket [5]
- Left wheel bearing (6303U) [8]
- Washers [3]
- Right wheel bearing (6203UU) [6]

- Replace the bearings and dust seal with new ones.
- Apply grease to the dust seal lip and bearing cavities.

Refer to procedures for bearing replacement (page 15-6).

XR125LK/LEK shown:



**WHEEL CENTER ADJUSTMENT**

Adjust the hub position so that the distance from the left end surface of the hub center to the side of rim is  $18.0 \pm 1.0$  mm ( $0.71 \pm 0.04$  in) as shown.

Tighten the spokes in 2 or 3 progressive steps.

**TOOL:**

Spoke wrench, 5.8 x 6.1 mm      07701-0020300

**TORQUE:** 3.7 N·m (0.4 kgf·m, 2.7 lbf·ft)

