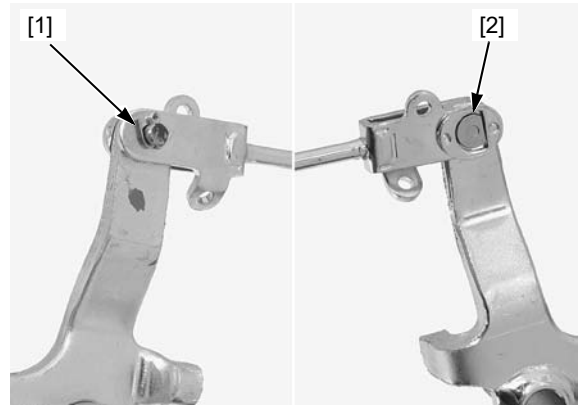


REAR WHEEL/BRAKE/SUSPENSION

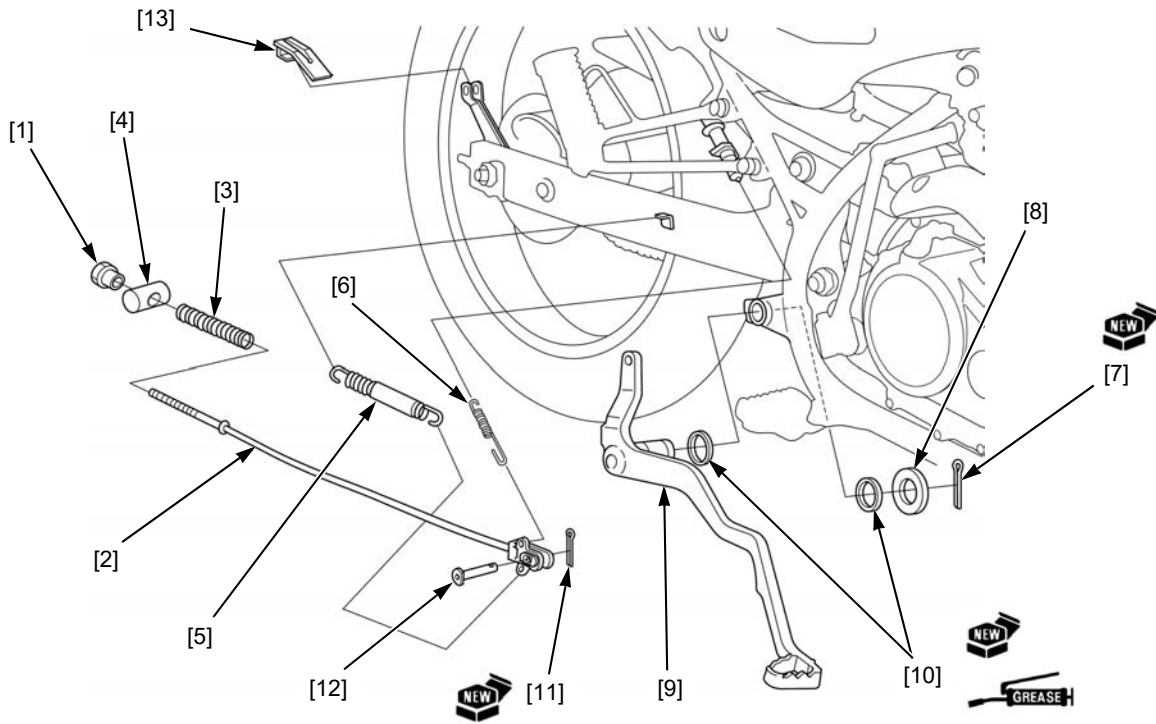
- Cotter pin [1]
- Pivot pin [2] (to separate the brake rod and pedal)



INSTALLATION

Install the brake pedal in the reverse order of removal.

- Brake adjusting nut [1]
- Joint pin [4]
- Cotter pin [7]
- Dust seals [10]
- Brake arm cover [13]
- Brake rod [2]
- Brake pedal return spring [5]
- Washer [8]
- Cotter pin [11]
- Spring [3]
- Brake light switch spring [6]
- Brake pedal [9]
- Pivot pin [12]



Apply grease to new dust seal lips.

Install the dust seals [1] with the lip facing the swingarm side (same direction).

Apply grease to the groove in the pedal pivot and install the brake pedal.

