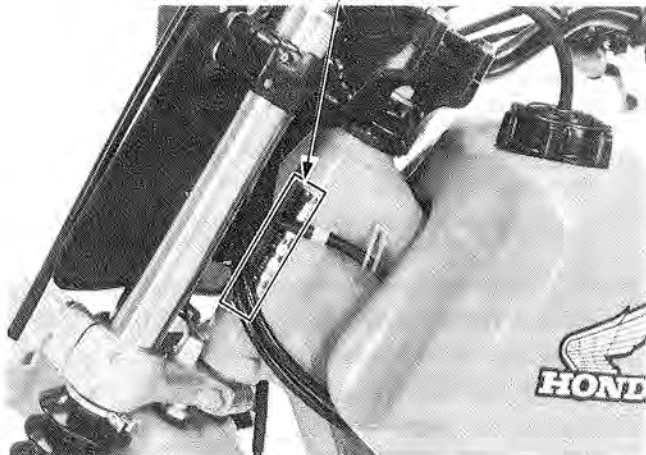




MODEL IDENTIFICATION

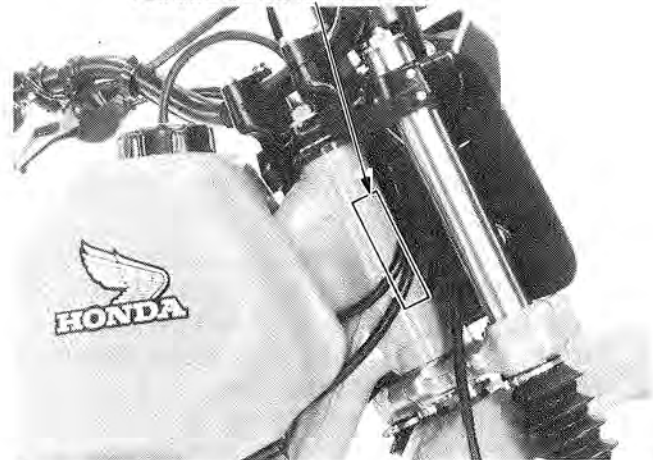


DATE OF MANUFACTURE



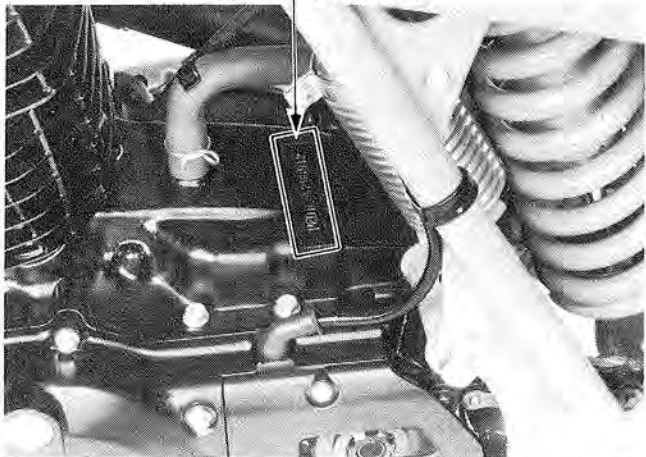
The vehicle identification number (VIN) is on the left side of the steering head.

FRAME SERIAL NUMBER



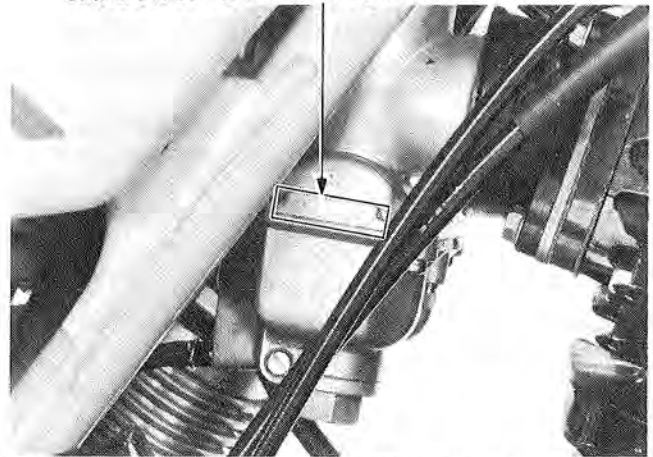
The frame serial number is stamped on the right side of the steering head.

ENGINE SERIAL NUMBER



The engine serial number is stamped on top of the crankcase.

CARBURETOR IDENTIFICATION NUMBER



The carburetor identification number is on the right side of the carburetor body.